

COMPACT  
**disc**  
Interactive

# GOLF TIPS

Customised golf instruction



English/ 日本語



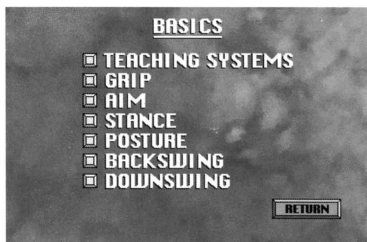
ゴルフ

ティ  
ツ  
プ  
ス

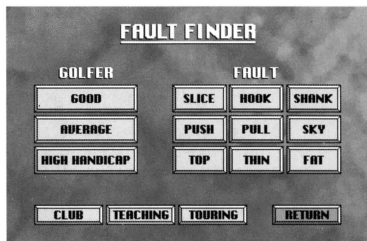


**PHILIPS**

# ABOUT THIS DISC



The Basics section of this disc will teach you the fundamentals of a good golf swing.



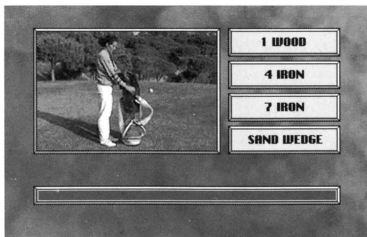
Fault Finder provides punchy, customised tips. First enter your ability by clicking on the good, average or high handicap panel. Next choose the professional instructor from whom you normally wish to receive lessons - the

orthodox American Teaching Pro, the cannie Scots Club Pro whose guidance will make the best of the swing you have, or the laid back Australian Touring Pro whose advice may stretch you to your limits.

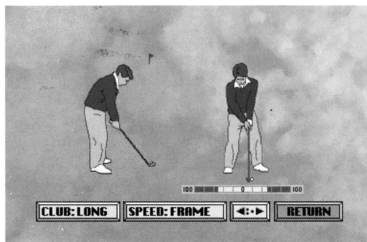
Then click on a fault to receive a personalised tip. You will notice that some of the tips are relevant to golfers of all standards in which case the 'golfer' panel fades.



In the Course Management section, first select your Pro tutor. Then choose your subject. As you move over the menu, you will notice that some situations are dealt with by a particular Pro. Where the options exist, your choice of tutor will return to the bottom of the screen.



The Test section will give you a chance to assess your understanding of the mechanics of the golf swing with a random selection of questions from the Teaching Pro. Simply click on the answer panel of your choice before it times out. Your score will tell you how attentive you have been.



The Swingman section allows you to

study an ideal golf swing. Select either a long or short club by clicking on the panel on the left. The moving yellow bar underneath Swingman shows his weight transfer during the swing. Select 'Normal' or 'Slow' speed by clicking on the middle panel. Click again for 'Frame' setting.

Move the arrow over the adjoining panel and use the 'one' or 'two' button on your controller to advance or reverse the action for a frame by frame analysis of Swingman.



The language panel on the bottom left of the Main Menu will take you into the Japanese version - just in case you want to improve your Japanese as well as your golf!



The Compact Disc Interactive System brings a new experience to television: interactive programming using digital video and superior sound reproduction that audiences have come to expect from the Compact Disc medium. In using CD-I

discs, viewers will operate a remote controller for three basic functions:

- **Cursor movement** Allows the viewer at designated times to position the cursor anywhere on the screen to select a program activity, or in any other way select an active zone or object on the screen.
- **Action Button One** Identified by one dot •, this button is used to initiate a given program activity selected by the cursor.
- **Action Button Two** Identified by two dots ••, this button may either duplicate the functions of Action Button One or offer additional functionality.

To locate the cursor and action buttons on your remote controller, please refer to the Instruction Manual of your CD-I player. Please note: functions may vary according to the title played. For more information, you may select special "Help" programs available on most CD-I titles.

In storing and handling your CD-I program, you should apply the same care as with conventional Compact Discs. No further cleaning is necessary if the Compact Disc is always held by the edges and is replaced in its case directly after playing. Should your CD-I disc display artifacts or playback problems, please remove it from the player and wipe it with a clean and lint-free, soft, dry cloth, always in a straight line from centre to edge. No solvent or abrasive cleaner should ever be used on the disc.