



1995

ALL THE NEWS AND VIEWS

PHILIPS

DIGITAL VIDEO ON CD-I

Main-menu and Basic Navigation

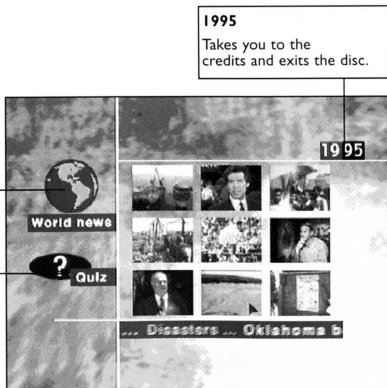
The main-menu screen is a 'video wall' made up of nine different video sequences and three icons. This 'video wall' allows you to choose from the nine news categories. As you pass your cursor over each video clip the scrolling text window at the bottom of the screen lets you know what category you are in and what the major stories in that category are:

World View

This takes you to the WorldView where you can tour the globe and access the news stories geographically.

Quiz

This takes you to a multiple choice 'Trivial Pursuit' type quiz based on this years news.



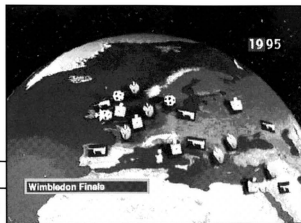
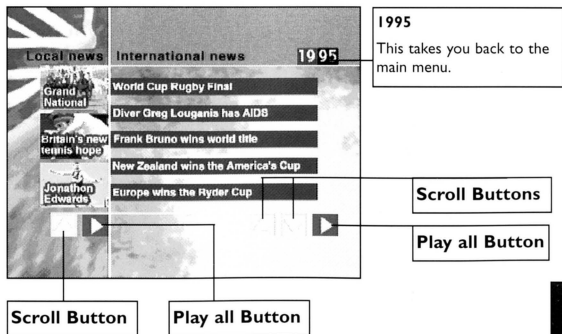
The News Categories

The news in each category is split in two: International news and Local (UK) news. If you see a story which you want to watch simply check on it and it will play. There are two types of news story. One is illustrated by video and the other by photographs.

When you select a news story which is a video item, the video plays until it ends when it will return you to your chosen category menu. When a video is playing, button one on your controller will stop the video while button two will pause it. Pressing button two a second time will restart the video.

When you select a news story which is a slide-show, the first photograph will appear, and the narration commences. The photos will change when relevant in the story and at the end will return you to your chosen category menu. When a slide-show is playing, button one on your controller will stop it while button two will pause it. Pressing button two a second time will cycle through the photographs until the last one when you shall be returned to your chosen category menu.

The up and down arrows scroll you through the stories in that category. The play all arrow will play all the International stories or UK stories, depending on which play button you have selected, one after the other. Clicking button one on your controller shall interrupt the 'play all' and will return you to the category menu. The 1995 icon will take you back to the main-menu.



WorldView

The WorldView is accessed through the globe icon in the main-menu.

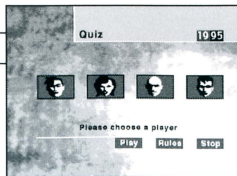
WorldView is an animation of the world which you can travel around to find the stories you want, geographically.

Move the 'plane' to the left, right, top or bottom of the screen and you shall move around the world. Move your 'plane' over the icons and title of that news story will appear in the bottom left of the screen. Clicking when over an icon will play that news story. The functionality within the story is the same as when accessing the stories from a category menu: When a story is finished you are returned to the part of the globe from where you selected the story. The 1995 icon will take you back to the main-menu.

Quiz

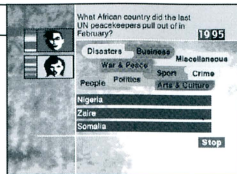
The quiz is accessed from the main-menu screen.

In the Quiz up to four people can play together. Select the players from the player icons in the first Quiz screen. Then select play. You can get the basic rules of the game explained to you by selecting the rules button.



Having selected play you are taken to the main quiz screen.

The categories flash randomly until you click button one on the controller. This stops the animation at a category and a question is displayed from that category. You answer the question by clicking on the answer you believe to be correct. If you are right, the colour band for that category shall appear on the left of your player icon and the animation will start for you to get another question. If you get it wrong the next player's icon will be highlighted for their turn.



The aim of the game is to get all nine category colour bands in the left part of your player icon.

Good luck!



THE COMPACT DISC INTERACTIVE SYSTEM the ultimate interactive programming experience using digital video and superior sound reproduction. When using CD-i discs, users will operate a remote controller for three basic functions:

- **CURSOR MOVEMENT** Allows the user to position the cursor anywhere on the screen or select an active zone or object.
- **ACTION BUTTON ONE** Identified by one dot •, this is used to select an activity with the cursor.
- **ACTION BUTTON TWO** Identified by two dots ••, this is used to duplicate button one or offer additional functionality.

You should apply the same care as with conventional Compact Discs. No further cleaning is required if the Compact Disc is held by the edges and replaced into its case after playing. Should your CD-i become dirty, please remove from the player and clean with a lint-free, soft, dry cloth. No solvent or abrasive cleaner must be used to clean the disc.

Need Help?

Want to Win Prizes?

Call 0891 244424

Philips Media Clubline

For hints and tips on all the latest titles

Leave a Question!

Enter the competition!

Calls cost 39p a minute cheap rate,
49p at all other times (max cost £3.68).

Please get permission from the person paying the bill. §