

INTERACTIVE™ VIDEO GAMES

NES-WL-USA

Who framed
ROGER RABBIT™

INSTRUCTION BOOKLET

THIS GAME IS
LICENSED BY NINTENDO
FOR PLAY ON THE



This official seal is your assurance that Nintendo® has reviewed this product and that it has met our standards for excellence in workmanship, reliability and entertainment value. Always look for this seal when buying games and accessories to ensure complete compatibility with your Nintendo Entertainment System®

NINTENDO AND NINTENDO
ENTERTAINMENT SYSTEM
ARE TRADEMARKS OF
NINTENDO OF AMERICA INC.

Treat Your Interactive Game Carefully

- This Interactive Game Pak is a precision-crafted device with complex electronic circuitry. Avoid subjecting it to undue shock or extremes of temperature. Never attempt to open or dismantle the Game Pak.
- Do not touch the terminal leads or allow them to come into contact with water or the game circuitry will be damaged.
- Always make sure your NES Control Deck is SWITCHED OFF when inserting the Game Pak or removing it from the NES Control Deck.
- Never insert your fingers or any metal objects into the terminal portion of the expansion connector. This can result in malfunction or damage.

INTRODUCTION

YOU'VE SEEN THE MOVIE. YOU KNOW THE STORY.

A HEARTBROKEN, HOLLYWOOD "TOON" STAR IS ACCUSED OF MURDERING ONE OF THE MOST POPULAR MEN IN TOWN. THE SAME MAN WHO WAS, JUST 24 HOURS EARLIER, SEEN PLAYING "PATTYCAKE" WITH OUR STAR'S LOVELY AND MYSTERIOUS WIFE. IT'S AN OPEN AND SHUT CASE, RIGHT? WRONG!

THIS IS WHERE YOUR JOB BEGINS. YOU MUST SEARCH HIGH AND LOW THROUGH DOWNTOWN LOS ANGELES, THE CITY PARK, THE WAREHOUSE DISTRICT AND EVEN TOONTOWN LOOKING FOR CLUES TO HELP EDDIE PROVE THAT ROGER IS INNOCENT. YOU HAVE TO UNEARTH ALL FOUR PAGES OF MARVIN'S MISSING WILL THAT WILL GUARANTEE TOONTOWN'S FUTURE FOREVER. AT THE SAME TIME, YOU MUST ALSO KEEP THE WEASELS FROM GETTING ROGER, PROTECT JESSICA FROM THE DREADED DIPMOBILE AND HELP EDDIE STAY OUT OF JAIL. AS IF THAT'S NOT ENOUGH, YOU MUST COLLECT THE RIGHT WEAPONS, ACCESSORIES AND FACTS THAT WILL ENABLE YOU TO DEFEAT JUDGE DOOM IN THE FINAL CONFRONTATION.

YOU'LL HAVE TO CALL UP ALL OF YOUR GAME PLAYING AND SUPER-SLEUTH DETECTIVE ABILITIES TO GET YOU THROUGH THIS ONE... AND THERE'S STILL NO GUARANTEE. IN THE END, THE JOKE COULD BE ON YOU.

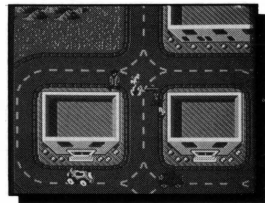
TABLE OF CONTENTS

GAME GUIDE	4	UH OH, THE WEASELS CAUGHT ROGER! ..	8
HOW TO PLAY	5	WHAT TO VISIT ON YOUR STAY IN L.A.	9
CLOSE-UP SIDE VIEW	5	WEAPONS AND POWER ITEMS	10
OVERHEAD MAP SCREEN	7	STRATEGY	12



GAME GUIDE

"WHO FRAMED ROGER RABBIT?" IS AN ACTION/ADVENTURE/DETECTIVE GAME WHICH WILL LEAD YOU ON A MERRY CHASE THRU THE FOUR SECTIONS OF 1940'S GREATER LOS ANGELES. EACH OF THESE SECTIONS WILL REQUIRE THE PLAYER TO EXPLORE MANY DIFFERENT ROOMS, BUILDINGS AND OUTDOOR LOCATIONS FOR HIDDEN CLUES TO THE CASE. THE OVERALL OBJECT IS SIMPLE. ALL YOU HAVE TO DO IS PUT AN END TO JUDGE DOOM'S EVIL PLAN BEFORE HE CAN "DIP" ROGER AND JESSICA. SOUNDS EASY ENOUGH. THE CATCH IS THAT BEFORE YOU CAN EVEN CHALLENGE DOOM, YOU MUST FIRST LOCATE ALL FOUR PIECES OF THE WILL, AS WELL AS COLLECT THE WEAPONS NEEDED TO BEAT HIM AND HIS BAD BUDDIES. ALL THE WHILE YOU ARE DOING THIS, YOU MUST ALSO BE CAREFUL NOT TO LET ROGER GET CAPTURED OR EDDIE GET ARRESTED.



THE GAME HAS TWO DIFFERENT POINTS OF VIEW; THE OVERHEAD MAP SCREEN AND THE CLOSE-UP SIDE VIEW. THE OVERHEAD MAP SCREEN LETS YOU MOVE THRU THE FOUR DIFFERENT SECTIONS OF LOS ANGELES; THE CITY, THE PARK, TOONTOWN AND THE WAREHOUSE DISTRICT. THE CLOSE-UP SIDE VIEW CONTAINS A NUMBER OF DIFFERENT SHOTS, FROM THE EXTERIORS OF BUILDINGS TO INTERIOR HALLWAYS AND INDIVIDUAL ROOMS. IN BOTH THE OVERHEAD

MAP SCREEN AND THE CLOSE-UP SIDE VIEW YOU WILL FIND CLUES THAT WILL LEAD YOU TO OBJECTS AND SOMETIMES THE OBJECTS THEMSELVES. SOME OF THE AREAS IN BOTH TYPES OF SCREENS WILL BE OFF LIMITS UNTIL YOU HAVE A CERTAIN OBJECT IN YOUR POSSESSION AND YOU FIGURE OUT HOW TO USE IT.

THERE ARE LOTS OF OBJECTS TO COLLECT, HUNDREDS OF CLUES TO HELP YOU FIND THEM, AND A WHOLE NEW WORLD TO EXPLORE.



HOW TO PLAY

GAME START

AFTER THE LEGAL SCREEN SWITCHES TO THE OPENING TITLE, YOU CAN PRESS ANY KEY TO JUMP TO THE SELECTION SCREEN. ON THIS SCREEN YOU CAN CHOOSE TO START THE GAME OR ENTER A PASSWORD BY USING SELECT AND THE START KEY. IF THIS IS YOUR FIRST TIME, DO NOT PICK THE "PASSWORD" OPTION, JUST START THE GAME. IF YOU HAVE PLAYED THE GAME BEFORE AND RECORDED THE CODE THAT WAS DISPLAYED AT THE END OF THAT SESSION, YOU CAN START EACH NEW GAME WITH THE OBJECTS YOU COLLECTED EARLIER. AFTER SELECTING "ENTER PASSWORD", YOU CAN SCROLL BACK AND FORTH THROUGH THE POSSIBLE CHOICES FOR EACH CHARACTER USING THE LEFT AND RIGHT ARROWS ON THE CONTROL PAD. THE "A" OR "B" BUTTON WILL LOCK IN EACH CHARACTER AND THE START KEY WILL ENTER THE ENTIRE CODE TO BEGIN THE GAME.

THE FIRST THING YOU WILL SEE IS THE CLOSE-UP SIDE VIEW OF THE INSIDE OF EDDIE'S OFFICE. ROGER WILL COME INTO THE ROOM FROM THE BOTTOM OF THE SCREEN AND YOU ARE READY TO PLAY.

3

CLOSE-UP SIDE VIEW

YOU CAN NOW USE THE CROSSKEY TO MOVE EDDIE AROUND THE ROOM OR EXIT BY HEADING OFF THE BOTTOM OF THE SCREEN. IN THE ROOM, YOU CAN SEARCH THRU DRAWERS, CABINETS OR ANYTHING THAT MIGHT HOLD AN OBJECT BY PUSHING AGAINST THEM WITH THE UP ARROW AND HITTING THE "A" BUTTON. WHEN YOU STEP OUTSIDE THE ROOM, YOU WILL FIND EDDIE AND ROGER IN THE CLOSE-UP SIDE



VIEW OF THE EXTERIOR OF THE BUILDING. AGAIN YOU HAVE THE CHOICE OF MOVING AROUND THIS SCREEN, WALKING BACK INTO THE BUILDING THRU THE FRONT DOOR OR EXITING TO THE OVERHEAD MAP SCREEN VIA THE BOTTOM OF THE SCREEN. IF EDDIE IS FACING SIDWAYS, THE "A" BUTTON IS USED TO SAY "CAN YOU HELP ME?" AND ASK A QUESTION OF ANYONE ELSE WHO HAPPENS TO PASS BY. NOTE: YOU CAN ALWAYS LEAVE A ROOM OR MOVE FROM THE SIDEWALK TO THE OVERHEAD MAP SCREEN BY WALKING OFF THE BOTTOM OF THE SCREEN.

CAN YOU HELP ME?



WHEN ENTERING SOME OF THE LARGER BUILDINGS, YOU FIND THE FIRST AREA EDDIE ENCOUNTERS WILL BE A HALLWAY WHICH LEADS TO SEVERAL DOORS. EACH DOOR WILL TAKE YOU TO A SEPARATE ROOM. YOU HAVE TO STAY ALERT BECAUSE THAT SILLY ROGER HAS A TENDENCY TO WANDER

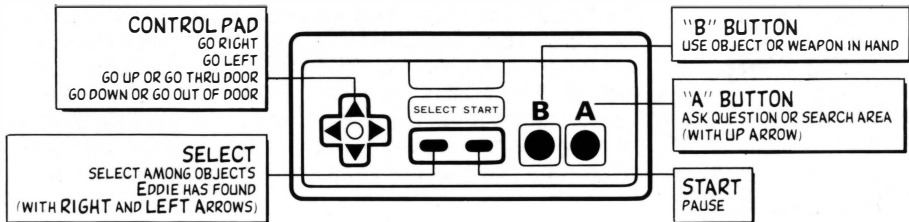
OFF IN THESE LARGER AREAS AND YOU MAY SOON FIND HIM IN TROUBLE.

IN THE CLOSE-UP SIDE VIEW YOU WILL BE ABLE TO USE THE VARIOUS OBJECTS THAT YOU HAVE COLLECTED. JUST HOLD **SELECT** AND USE THE **LEFT** AND **RIGHT** ARROWS TO SWITCH BETWEEN THE DIFFERENT OBJECTS IN YOUR POSSESSION.

IF YOU HAVEN'T FOUND ANY WEAPONS OR TOOLS YET, DON'T WORRY, BECAUSE WHEN YOU FIRST START THE GAME, PUSHING THE "**B**" BUTTON WILL ALLOW EDDIE TO USE HIS FIST AS A WEAPON. UNFORTUNATELY IT WON'T STOP THE WEASELS FOR LONG. HOWEVER, IF YOU PRESS THE "**B**" BUTTON VERY RAPIDLY, EDDIE WILL WINDUP TO THROW A MORE POWERFUL PUNCH. CAREFUL THOUGH, BECAUSE EDDIE DOESN'T MANEUVER VERY WELL IN HIS WINDUP POSITION AND HE IS QUITE VULNERABLE AT THIS TIME.



HOW TO USE THE CONTROLLER



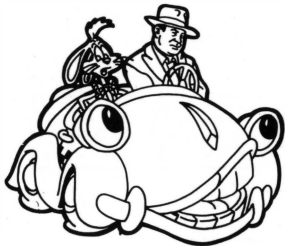
4

OVERHEAD MAP SCREEN

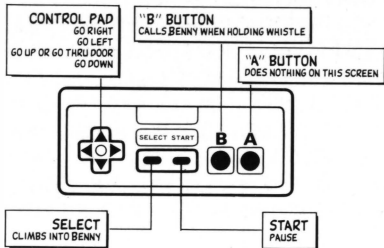
IF YOU ARE IN FRONT OF THE BUILDING, AFTER LEAVING EDDIE'S OFFICE AND YOU MOVE TOWARD THE BOTTOM OF THE SCREEN YOU WILL FIND ROGER AND EDDIE ON THE OVERHEAD MAP SCREEN. NOW YOU ARE ABLE TO WALK DOWN THE ROAD, EXPLORE OTHER BUILDINGS OR SEARCH THE WOODED AREA. THE PROBLEM IS THAT THOSE PESKY WEASELS ARE GOING TO BE CHASING YOU EVERYWHERE YOU GO.



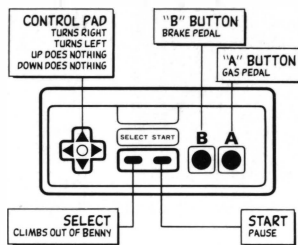
ONE WAY TO OUTFRAN THEM IS TO CATCH A RIDE WITH BENNY. WHAT'S THAT, YOU DON'T SEE BENNY AROUND? WELL IF YOU'RE HOLDING THE WHISTLE, PUSH THE "B" BUTTON AND YOU CAN CALL HIM. BUT IT ONLY WORKS WHEN EDDIE IS STANDING IN THE ROAD. IF YOU HAVEN'T FOUND THE WHISTLE YET, YOU'LL JUST HAVE TO WALK AROUND AND LOOK FOR HIM. ONCE BENNY IS FOUND, RUN OVER TO HIM AND PUSH THE SELECT BUTTON. THIS WILL PLACE EDDIE AND ROGER IN THE FRONT SEAT. THE CONTROL PAD WILL TURN BENNY LEFT AND RIGHT, WHILE THE "A" BUTTON IS THE GAS PEDAL AND THE "B" BUTTON IS THE BRAKE. BENNY CAN'T LEAVE THE ROAD, SO EXPLORING THE WOODS AND CAVES IN THE PARK MUST BE DONE ON FOOT. HOWEVER DRIVING BENNY IS THE ONLY WAY TO GO THRU THE TUNNELS LEADING INTO ANOTHER SECTION.



HOW TO USE THE CONTROLLER (WHEN ON FOOT)



HOW TO USE THE CONTROLLER (WHEN IN BENNY)



UH OH, THE WEASELS CAUGHT ROGER!

IN THE OVERHEAD MAP SCREEN YOU WEREN'T QUICK ENOUGH IN OUTMANEUVERING THE WEASELS, THEY GRABBED ROGER AND YOU FIND YOURSELF BACK IN THE CLOSE-UP SIDE VIEW. THE BIG DUMB WEASEL NAMED "STUPID" IS ABOUT TO SMASH YOUR BUDDY WITH A BASEBALL BAT. JUST BEFORE HE SWINGS, ROGER ASKS A QUESTION WHICH IS THE OPENING TO A JOKE. IF YOU CAN COME UP WITH THE CORRECT PUNCHLINE IN NINE "TOON" SECONDS, THE WEASELS WILL LAUGH HARD ENOUGH WHICH CAUSES THEM TO RELEASE ROGER, GIVING HIM TIME TO ESCAPE.

AT THE TOP OF THE SCREEN YOU WILL SEE A ROW OF SMALL SQUARES. THESE ARE THE PUNCHLINES THAT YOU HAVE TO CHOOSE FROM. HOLD THE SELECT KEY WHILE PRESSING



THE LEFT AND RIGHT ARROWS TO PAGE THRU THE LIST. WHEN YOU THINK YOU HAVE THE RIGHT ANSWER, PRESS THE "A" OR "B" BUTTON. IF YOU GUESS WRONG OR RUN OUT OF TIME, ROGER GETS HIT AND YOU LOSE ONE OF YOUR "CLAP BOARDS". LOSE THEM ALL AND THE GAME IS OVER. IT'S NOT TOO HARD WHEN YOU ONLY HAVE A FEW PUNCHLINES, BUT IT GETS A LOT TOUGHER WHEN THE WHOLE ROW IS FULL. BY THE WAY, EDDIE CAN ACCIDENTALLY GET A NEW PUNCHLINE WHEN HE SEARCHES THE WRONG PLACE. SO BE CAREFUL.

6

WHAT TO VISIT ON YOUR STAY IN L.A.

THERE ARE CAVES TO BE FOUND IN THE PARK AREA, WHICH IS ABOVE THE CITY OF L.A. WHAT IS INSIDE THESE CAVES AND WHERE DO THEY LEAD? WE'RE NOT TELLING. SO I GUESS YOU HAD BETTER JUST CHECK THEM OUT.

AS IN ALL BIG CITIES, YOU NEED TO KEEP YOUR EYE OUT FOR CERTAIN DANGERS. FALLING FLOWER POTS AND BOTTLES ARE A PROBLEM IF YOU STAY ON THE SIDEWALKS AND THERE ARE SPEEDING CARS TO AVOID IN THE STREETS, AND EVERY TIME YOU TURN AROUND, HERE COME THOSE PESKY WEASELS AGAIN. SURE, YOU CAN OUT RUN THEM IN BENNY, BUT WHAT WILL YOU DO WHEN THEY JUMP IN THEIR PADDY-WAGON? AHH, LIFE IN THE BIG CITY, AIN'T IT GREAT?





WEAPONS AND POWER ITEMS [some, but not all]



CROWBAR



BRICK



FIST



BASEBALL



FISHBONE



SPRING SHOES



DYNAMITE



BOMB



ROSE



PASSWORD



PORTABLE HOLE



WALLET



WHISTLE



SIX SHOOTER



EXPLODING CIGAR



GLOVE

??????????

WHEN HOLDING ANY OBJECTS THAT ARE FOUND IN THE GAME, THE "B" BUTTON CAUSES SOME OF THEM TO BE USED, SOME TO BE THROWN, AND SOME TO BE JUST PLACED ON THE GROUND. TO CHOOSE ANOTHER OBJECT, HOLD SELECT AND MOVE BACK AND FORTH WITH THE LEFT AND RIGHT ARROWS. EACH OBJECT HAS A DIFFERENT PURPOSE AND

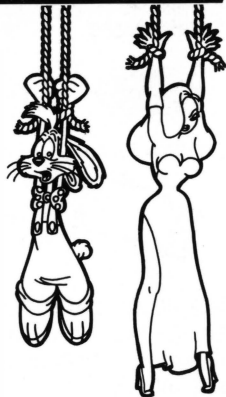
SOME CAN BE USED REPEATEDLY WHILE OTHERS ONLY ONCE. FOR EXAMPLE, THE CROWBAR CAN BE THROWN AT A LOCKED DOOR IN ORDER TO BREAK THE LOCK. THE WHISTLE IS USED TO CALL BENNY TO COME PICK UP EDDIE AND ROGER. ON THE OTHER HAND THE CIGAR IS PLACED ON THE GROUND WHERE A TOON OR HUMAN CAN PICK IT UP AND HAVE IT EXPLODE ON THEM. WHAT ABOUT ALL THE OTHER OBJECTS IN THE GAME? HOW MANY DIFFERENT ONES ARE THERE? HOW DO YOU MAKE USE OF THEM? WHERE ARE THEY LOCATED? WELL, YOU'RE THE DETECTIVE, YOU FIGURE IT OUT.

8

STRATEGY

IN AN ADVENTURE GAME SUCH AS THIS, IT ALWAYS HELPS TO DRAW A MAP AND LIST THE LOCATION OF THE VARIOUS OBJECTS THAT YOU PICK UP. BE SURE AND WRITE DOWN THE CLUES THAT YOU FIND. IT MIGHT TAKE A WHILE TO FIGURE OUT WHAT THEY MEAN, BUT BE PERSISTENT. SOME AREAS MAY NOT BE ACCESSIBLE WHEN YOU FIRST START THE GAME. DON'T WORRY, YOU JUST HAVEN'T FOUND THE RIGHT WAY TO ENTER THAT SECTION. FOR INSTANCE, SOME DOORS HAVE LOCKS ON THEM. THERE IS A WAY TO GET IN AND ALL YOU HAVE TO DO IS FIGURE IT OUT.

CLUE: AS TIME GOES ON, YOU WILL FIND THAT JUDGE DOOM IS BUYING UP MORE AND MORE OF THE L.A. AREA. AND THE JUDGE LIKES TO KEEP HIS BUILDINGS LOCKED. BREAKING AND ENTERING MAY SET OFF AN



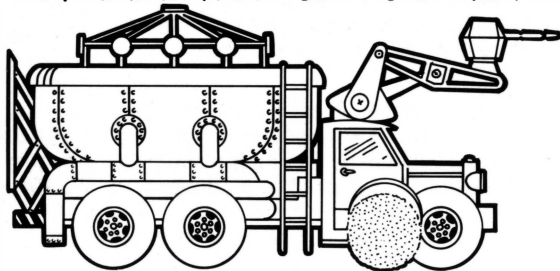


ALARM AND FORCE EDDIE TO HURRY HIS INVESTIGATION TO AVOID BEING CAPTURED BY THE CROOKED COPS ON DOOM'S PAYROLL. YOU'VE BEEN WARNED.

ANOTHER HINT FOR A BUDDING YOUNG DETECTIVE IS TO EXPLORE EVERYWHERE AND EVERYTHING. AND THEN EXPLORE SOME MORE. CURIOSITY MIGHT HAVE KILLED THE CAT, BUT IT IS THE ONLY THING THAT WILL GET YOU THROUGH THIS CRAZY CITY.

OKAY, LET'S SAY THAT YOU FOUND ALL THE OBJECTS (MAYBE), SOLVED ALL THE CLUES, (YOU THINK) AND YOU KNOW YOUR WAY AROUND TOONTOWN, LIKE THE BACK OF YOUR HAND. JUST AS YOU GET TO THE TOON WAREHOUSE, ROGER IS GRABBED BY THE WEASELS AND THEY DISAPPEAR INSIDE. THIS TIME THE STANDARD WAYS YOU DISCOVERED TO USE YOUR WEAPONS JUST DON'T SEEM TO CUT IT. OKAY, NOW WHAT DO YOU DO?

CLUE: IT'S TIME TO EXPERIMENT. REMEMBER HOW EDDIE GOT BY THE JUDGE'S HENCHMEN IN THE MOVIE? SOME OF YOUR OBJECTS JUST MIGHT HAVE A DUAL FUNCTION IN THIS SCENE. GUESS WHICH ONES AND HOW TO USE THEM, AND YOU'LL FIND YOURSELF FACING THE BIG BOSSMAN HIMSELF.



COMPLIANCE WITH FCC REGULATIONS

This equipment generates and uses radio frequency energy and if not installed and used properly, that is, in strict accordance with the manufacturer's instructions, may cause interference to radio and television reception.

It has been type tested and found to comply with the limits for a Class B computing device in accordance with the specifications in Subpart J of Part 15 of FCC Rules, which are designed to provide reasonable protection against such interference in a residential installation. However, there is no guarantee that interference will not occur in a particular installation.

If this equipment does cause interference to radio or television reception, which can be determined by turning the equipment off and on, the user is encouraged

to try to correct the interference by one or more of the following measures:

- Reorient the receiving antenna
- Relocate the NES with respect to the receiver
- Move the NES away from the receiver
- Plug the NES into a different outlet so that computer and receiver are on different circuits

If necessary, the user should consult the dealer or an experienced radio/television technician for additional suggestions. The user may find the following booklet prepared by the Federal Communications Commission helpful: How to Identify and Resolve Radio-TV Interference Problems. This booklet is available from the U.S. Government Printing Office, Washington, DC 20402, Stock No. 004-000-00345-4.

LIMITED WARRANTY

LJN TOYS, LTD. warrants to the original purchaser of this Enteractive software product that the medium on which this computer program is recorded is free from defects in materials and workmanship for a period of ninety (90) days from the date of purchase. This Enteractive software program is sold "as is," without express or implied warranty of any kind, and LJN is not liable for any losses or damages of any kind resulting from use of this program. LJN agrees for a period of ninety (90) days to either repair or replace, at its option, free of charge, any Enteractive software product, postage paid, with proof of date of purchase, at its Factory Service Center.

This warranty is not applicable to normal wear and tear. This warranty shall not be applicable and shall be void if the defect in the Enteractive software product has arisen through abuse, unreasonable use, mistreatment or neglect. THIS WARRANTY IS IN LIEU OF ALL OTHER WARRANTIES AND NO OTHER REPRESENTATIONS OR CLAIMS OF ANY NATURE SHALL BE BINDING ON OR OBLIGATE LJN. ANY IMPLIED WARRANTIES APPLICABLE TO THIS SOFTWARE PRODUCT, INCLUDING WARRANTIES OR MERCHANTABILITY AND FITNESS FOR A PARTICULAR PURPOSE, ARE LIMITED TO THE NINETY (90) DAY PERIOD DESCRIBED ABOVE. IN NO EVENT WILL LJN BE LIABLE FOR ANY SPECIAL, INCIDENTAL, OR CONSEQUENTIAL DAMAGES RESULTING FROM POSSESSION, USE OR MALFUNCTION OF THIS ENTERACTIVE SOFTWARE PRODUCT.

Some states do not allow limitations as to how long an implied warranty lasts and/or exclusions or limitations of incidental or consequential damages so the above limitations and/or exclusions of liability may no apply to you. This warranty gives you specific rights, and you may also have other rights which vary from state to state.



TM and © 1989 LJN Toys, Ltd.

TM and © 1987 The Walt Disney Company and Amblin Entertainment, Inc.
Nintendo and Nintendo Entertainment System® are trademarks of Nintendo of America Inc.
Game Pak "NES-GP"

Printed in Japan