

CSG IMAGESOFT INC

LICENSED BY NINTENDO® FOR PLAY ON THE

Nintendo ENTERTAINMENT SYSTEM™

NES-LX-USA ★

Solstice™

The Quest for the Staff of Demnos

**Instruction
Manual**



CSG IMAGESOFT INC. LIMITED WARRANTY

CSG IMAGESOFT INC. warrants to the original purchaser of this CSG IMAGESOFT software product that the medium on which this computer program is recorded is free from defects in materials and workmanship for a period of ninety (90) days from the date of purchase. This CSG IMAGESOFT software program is sold "as is," without express or implied warranty of any kind, and CSG IMAGESOFT is not liable for any losses or damages of any kind resulting from use of this program. CSG IMAGESOFT agrees for a period of ninety (90) days to either repair or replace, at its option, free of charge, any CSG IMAGESOFT software product, postage paid, with proof of date of purchase, at its Factory Service Center.

This warranty is not applicable to normal wear and tear. This warranty shall not be applicable and shall be void if the defect in the CSG IMAGESOFT software product has arisen through abuse, unreasonable use, mistreatment or neglect. THIS WARRANTY IS IN LIEU OF ALL OTHER WARRANTIES AND NO OTHER REPRESENTATIONS OR CLAIMS OF ANY NATURE SHALL BE BINDING ON OR OBLIGATE CSG IMAGESOFT. ANY IMPLIED WARRANTIES APPLICABLE TO THIS SOFTWARE PRODUCT, INCLUDING WARRANTIES OF MERCHANTABILITY AND FITNESS FOR A PARTICULAR PURPOSE, ARE LIMITED TO THE NINETY (90) DAY

PERIOD DESCRIBED ABOVE. IN NO EVENT WILL CSG IMAGESOFT BE LIABLE FOR ANY SPECIAL, INCIDENTAL, OR CONSEQUENTIAL DAMAGES RESULTING FROM POSSESSION, USE OR MALFUNCTION OF THIS CSG IMAGESOFT SOFTWARE PRODUCT.

Some states do not allow limitations as to how long an implied warranty lasts and/or exclusions or limitations of incidental or consequential damages so the above limitations and/or exclusions may not apply to you. This warranty gives you specific rights, and you may also have other rights which vary from state to state.



SOLSTICE™ is distributed by CSG Imagesoft Inc., Los Angeles CA. "CSG IMAGESOFT™" and "IMAGESOFT™" are trademarks of CSG Imagesoft Inc. "SOLSTICE™" is a trademark of Software Creations (ROM Developments) Ltd. © 1989 Software Creations (Rom Developments) Ltd. Nintendo® And Nintendo Entertainment System® are trademarks of Nintendo of America Inc.



This official seal is your assurance that Nintendo® has reviewed this product and that it has met our standards for excellence in workmanship, reliability and entertainment value. Always look for this seal when buying games and accessories to ensure complete compatibility with your Nintendo Entertainment System.®

Nintendo recommends against using a rear projection television with your NES as image retention on the screen may occur.

Game Pak (NES-GP)

*Licensed by Nintendo®
for play on the*

Nintendo

ENTERTAINMENT SYSTEM®

IMAGESOFT™

9200 Sunset Blvd. Suite 820
Los Angeles, California 90069

THE LEGEND OF KÂSTLERÖCK*

*When darkness slithers through
the land,
On Evil's foul and fiendish band,
Ere blackness o'er man's hearts
has crossed,
Recall these words of legend lost.*

*Neath Kâstleröck's well guarded walls,
One hope for man in ancient halls.
Safe bid from Evil's searching eyes,
The shattered Stâff of Demnos lies . . .*

*Each hundred years on full moon's rise
High in the winter solstice skies,
The spell that cloaks the staff shall
break,
Revealing that which all would take . . .*

**excerpt form the ancient rûne poem
as translated by Shadax the Sorcerer*

**Thank you for selecting CSG IMAGESOFT INC.
Solstice Game Pak. Please read the instruction
booklet to ensure proper handling of
your new game.**

PRECAUTIONS

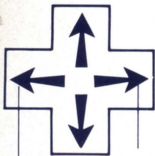
1. This is a high precision game. It should not be stored in places that are very hot or very cold. Never hit or drop it. Do not take it apart.
2. Avoid touching the connectors and do not get them wet or dirty. Doing so may damage the game.
3. Do not clean with benzene, paint thinner, alcohol or other such solvents.

CONTENTS

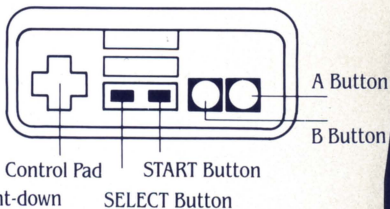
• <i>The Legend of Kâstleröck</i>	4
• <i>How to use the Controller</i>	6
• <i>The Quest for the Staff of Demnos</i>	7
• <i>The Journey Througb Kâstleröck</i>	11
• <i>Winning the Game</i>	19

HOW TO USE THE CONTROLLER

Move right-up



Move left-down
Move left-up



GAME SCREEN

- A Button:** Push to jump.
- B Button:** Push to pick up and drop objects.
- A + B Button:** Push both to jump and pick up an object at the same time.
- Start Button:** Push to start the game or activate a potion.
- Select Button:** Push to enter the Select Screen.
- Control pad:** Push to move in any of four directions within a room.

SELECT SCREEN

- A Button:** Push to view map or statistics.
- Control pad:** Push to select a potion (potions can only be activated in the Game Screen).
- Select Button:** Push to return to the Game Screen.

THE QUEST FOR THE STAFF OF DEMNOS

As the full moon rose high above Kâstleröck on the eve of the winter solstice, Morbius the Malevolent grinned a wicked grin and continued to ready the impending ritual, the sacrifice of a helpless damsel to the forces of darkness in return for total domination of the world. But this was no simple girl, he thought in his black and twisted mind, this was the beautiful Princess Eleanor of Arcadia, the land of his sworn enemy. It was too perfect, too perfect.

Not even that accursed Staff of Demnos could stand in his way now. For years his spies had used every conceivably horrible method to find it, and if they could not succeed, surely no one else would. Besides, with or without the magic Staff, his evil plans would succeed. With or without it, he would become the supreme symbol of evil, the Black Baron of Darkness. Then all would be forced to grovel at his feet. And he would plunge the world into a deathly darkness from which it would never return. Everything was prepared. Nothing could stop him now!

The fearsome fortress of Kâstleröck had long been the stronghold of Morbius the Malevolent. Built high atop a tremendous cliff of jagged rock, rising straight up from the Sea of Sorrows, the castle had withstood the onslaught of many great armies over the centuries.

Rumors of secret halls and rooms protected by deadly black magic and ferocious man eating beasts had entered the legends of old by the few fortunate prisoners who had escaped Morbius' torturous clutches. They trembled while talking of the dreaded Caves of the Doomed Souls, an endless labyrinth of catacombs carved out of the sheer rock cliff far beneath the castle walls. The words crept from their tongues when they spoke of the four deadly towers of the main castle, as if with a mere mention they could be transported back by some of Morbius's evil black magic.

Brave men cowered in fear when they heard the terrible tales of torture in the Gardens of Pain and the Blood Gardens just to the west of the castle. Women and children wept when told of the grisly horrors that befell the unsuspecting who wandered aimlessly through the Slaughter Yards that protected the Tower of Tears at the northernmost boundary of Kåstleröck. And few words could describe the hideous screams of terror from the foolhardy who mistakenly tumbled into the Mines of Insanity, never to be heard from again.

But, no stories could compare with those of the eastern grounds of the castle where the Tower of Ultimate Terror stood surrounded by the gruesome Stonebedge Gardens whose massive walls were said to be made from the crushed bones of Morbius' unfortunate victims. Of the Tower itself, little was known. Many believed that it was the site of Morbius' secret workshop; such an overwhelming sense of fear hung about its walls. Certainly, it was the source of his evil powers; as for many days now a black cloud could be seen pouring forth from it, spreading across the land, and choking off the last hopeful rays of the sun.

The old sorcerer Shadax stood at the foot of the great cliff of Kästleröck and stared into the blackness above. Having sailed unseen across the Sea of Sorrows, he now set his mind firmly on the task at hand. He knew a secret way into the castle, a way unknown to even Morbius himself. He'd discovered it by carefully translating the ancient rûne maps and poetry he'd found in the Library of the Oracles in far off Arcadia. But he knew getting in was the least of his worries. After all, Morbius would never expect that someone would actually want to get into Kästleröck.

Hopefully, his disguise would provide him with the element of surprise he so needed. After all, who would suspect that an old man could cause any trouble in such a deadly powerful place. But he was not the withered old beggar he appeared. His true identity remained safely concealed beneath his tattered cloak and hat, and there it would stay until he possessed the strength he needed to confront Morbius. For powerful as Shadax was, he was still no match for the vast forces of darkness growing daily in the hands of the evil Baron. For this task he needed the strongest of allies; he needed the awesome power of the Staff of Demnos.

According to legend, this magical Staff had been forged long long ago in the mystical fires of the mythical

Elf Kingdom of Old Earth. And legend had it that he who possessed this mighty weapon, would rule Heaven and Earth. How it had wound up in the hands of mankind is a tale far too long to tell here, but in the wise hands of the Ancient kings of Arcadia, it had provided centuries of peace and prosperity.

However, many years ago, for fear that it would fall into Morbius' increasingly powerful grip, the Staff had been broken into six pieces, a spell of invisibility had been cast upon them, and they were scattered to the far corners of the continent. At least that is what was popularly believed. But, once again Shadax knew something his enemy did not.

If the ancient rûne poems were true, the pieces of the staff had been hidden in the last place Morbius would ever think to look: in his own castle. And only once every hundred years, would the spell be broken, allowing the pieces of the staff to be seen once again by human eyes; on the eve of the winter solstice when the full moon rode high in the heavens. That is if the ancient poems were true... if he could even find where the staff was hidden in this deadly place... if, if, if...

But, this was not a time for idle thinking. Morbius had sent most of his vile forces throughout the land in search of the broken pieces of the magical staff leaving Kästleröck thinly guarded. If ever Shadax's plan were to succeed, it would be this night. It was time to claim his rightful place as a king among men, or vanish anonymously into the black abyss of history.

THE JOURNEY THROUGH KÄSTLERÖCK

Shadax, armed only with a few magic potions and a magic map, must venture through the more than 250 rooms of Kästleröck in search of the six pieces of the Staff of Demnos. Only after the staff has been reassembled can he hope to defeat the merciless Morbius and free Princess Eleanor.

THE MAGIC POTIONS

There are four different magic potions, each having unique and powerful properties. The potions are stored in beakers which are located on the Select Screen. Each beaker can hold up to four doses of a potion (at the beginning of the quest there are only two doses in each beaker, but more can be found along the way). While a beaker is full, no additional potion can be added to it. You can use any number of different potions at the same time in a given room. But remember, once you leave, all spells will be broken.



a piece of staff

*Blue Potion (The Shield of Life):
This spell gives you invincibility
against moving enemies and moving
enemy weapons.*

*Purple Potion
(The Elixir of Destruction):
This potion destroys all moving objects
in a room.*

*Yellow Potion (The Guardian of Time):
This potion stops time, freezing all
moving objects in place (you can still
move these objects by pushing them or
picking them up).*

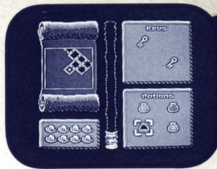
*Green Potion (The Eyes of the Blind):
This potion casts a spell which makes
all invisible objects suddenly appear.*

*To use a potion, first press select
to enter the Select Screen. Then use the
control pad to choose one of the four
potions. Press select again to return to
the Game Screen. Then push the start
button to activate the potion. A potion's
spell only lasts as long as you remain
in the room. If you wish to activate
another potion in the same room,
repeat the process described above.*



THE MAGIC MAP

This map keeps a chronicle of every room that Shadax has entered and indicates all the possible exits (some rooms may have secret exits that appear on the map but won't appear on the Game Screen until you perform certain tasks). Rooms only appear on the map after Shadax has entered them. The map is located on the Select Screen which is accessed by pressing the select button. Any room on the map that is outlined in white has other rooms above and/or below it. If you press the A button while viewing the map, it shows you the number of rooms you have visited and a percentage of the total number of rooms, plus the total number of magic objects you have found (i.e. potions, pieces of the staff, etc.)



THE MAGIC ELFIN BOOTS

These green elfin boots allow Shadax to jump higher than he is able to at the beginning of the quest. It is essential that he find these boots in order to complete his journey.



THE FOUR KEYS

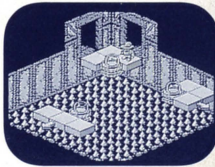
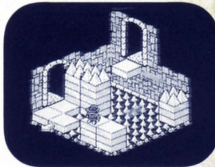
There are four keys hidden throughout Kåstleröck. In order to complete the quest, Shadax must find all four keys. Once the sorcerer has found a key, it will become visible on the Select Screen. These magical keys enable the Shadax to journey through rooms that were previously impassable. Each key will do one of the following:

- *Make blocks appear in a previously empty room*
- *Make a door appear in a solid wall*



BLOCKS AND HOVERING CRYSTAL BALLS

Movable blocks appear in many rooms of the castle. Sometimes they fall from above and other times they can be found lying on the floor. Shadax can use these blocks to move safely through rooms. The blocks can be picked up by jumping on them and then pressing the B button. They can then be carried anywhere in a room and released by pressing the B button again. They can also be picked up and carried through the air by pressing the A and B buttons at the same time and then pressing the B button again to release the block in the air. Falling blocks can be frozen in mid-air to be used as steps (use the yellow potion). Other blocks can be used as protection from the large poisonous pyramid spikes and other enemies of the old sorcerer. However, they will not provide protection from the deadly needle spikes that cover the floors in many of Kästleröck's rooms. The Hovering Crystal Balls can be pushed through the air and ridden by Shadax. They cannot, however, be picked up and carried.



THE HATS OF LIFE

There are many blue bats scattered throughout the castle grounds. When Shadax picks one up, it gives him an extra life. He can collect as many bats as he finds. The Select Screen keeps a record of the number of lives the sorcerer has left. Although the screen only registers up to ten bats at one time, Shadax can continue to pick up and use more than ten total bats.

BLASTING BOMBS

In several rooms, rotating blasting bombs can be exploded to create holes in solid walls which allow passage to previously blocked off passageways. However, the detonators for the bombs must be searched for, as they are hidden in nearby rooms.

THE PORTALS

Several rooms have floor portals in them which provide the only access to certain parts of Kåstleröck. In order to transport Shadax through a portal, jump on top of it and press the B button. The sorcerer will disappear and then materialize in another portal room.

THE SPINNING COINS

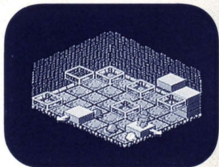
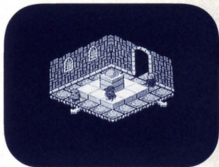
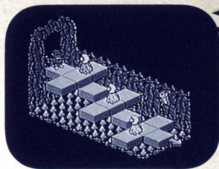
These coins allow Shadax to use the continue mode to return to a certain point in Kåstleröck after he has lost all of his lives instead of having to start all over from the beginning. The coins are located in various rooms throughout the castle.



THE PERILS OF KÂSTLERÖCK

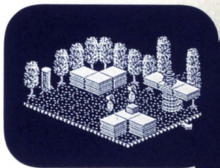
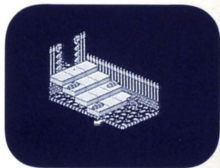
The rooms and grounds of Kâstleröck are filled with danger. Many floors are covered with poisonous spikes and deadly monsters are always lurking around the next dark corner waiting to pounce on the unsuspecting sorcerer. These creatures include the following exotic killer beasts:

Marching Skulls
Evil Eyeballs
Bow-legged Trolls
Slime Balls



***Attack Furs
Tripod Spiders
Tusk Demons
Four-eyed Head-feet***

In some rooms deceptive conveyor belts have been strategically placed to hurl the unwary Shadax to his doom. In other rooms bridges and floor tiles vanish without a warning, leaving the sorcerer to plunge to his death on the spikes below. Floating air mines, which block many passages, wait to explode at the slightest touch, while wide chasms and mighty towers challenge Shadax to attempt deadly leaps in order to continue on his journey.



WINNING THE GAME

To win the game Shadax must rescue Princess Eleanor after finding all six pieces of the magical Staff of Demnos before he is destroyed by the evil forces of Kästleröck. He should be sparing in his use of magic potions, as there is a limited supply of each and they are essential to his ultimate success. He should also pay careful attention to the magic map. If it shows doors where none appear on the game screen or indicates rooms above or below existing rooms when no exits or entrances are in sight, he must believe the map. It offers his best chance to solve the many mysteries of the forbidden castle and complete his dangerous quest...

But remember, surviving the treacherous fortress of Kästleröck takes far more than a few magic potions and a magic map. It takes nerves of steel and the courage to try new and daring things. It takes superior reflexes and a determination to face the unrelenting perils that block your every move. It takes a clever mind and a passion to succeed against insurmountable odds. But most of all it takes the conviction that in the end good shall always triumph over evil.

SOLSTICE

Produced by the Solstice Team

Programed by Mike Webb

Graphics by Mark Wilson

Music by Timothy Follin

Associate producers/Los Angeles

Jeff Benjamin

Larry Castro

Associate producers/Tokyo

Yuji Takabasbi

Ryotaro Hasegawa

Cozy Watanabe

Executive producers

Richard Kay, England

Sbigeo Maruyama, Japan

Hiroaki Isbikawa, U.S.

Packaging Design

Carol Roy



"Shooax! help me!"



"Princess Eleanor!"



"Princess Eleanor is HIDE."

COMPLIANCE WITH FCC REGULATIONS

This equipment generates and uses radio frequency energy and if not installed and used properly, that is, in strict accordance with the manufacturer's instructions, may cause interference to radio and television reception. It has been type tested and found to comply with the limits for a Class B computing device in accordance with the specifications in Subpart J of Part 15 of FCC Rules, which are designed to provide reasonable protection against such interference in a residential installation. However, there is no guarantee that interference will not occur in a particular installation. If this equipment does cause interference to radio or television reception, which can be determined by turning the equipment off and on, the user is encouraged to try to correct the interference by one or more of the following measures:

- Reorient the receiving antenna
- Relocate the NES with respect to the receiver
- Move the NES away from the receiver
- Plug the NES into a different outlet so that computer and receiver are on different circuits

If necessary, the user should consult the dealer or an experienced radio/television technician for additional suggestions. The user may find the following booklet prepared by the Federal Communications Commission helpful:

How to Identify and Resolve Radio-TV Interference Problems.
This booklet is available from the U.S. Government Printing Office, Washington, D.C. 20402, Stock No. 004-000-00345-4.



SOLSTICE™

The Quest for the Staff of Demnos

CSG IMAGESOFT INC

9200 Sunset Blvd. Suite 820
Los Angeles, California 90069

Printed in Japan