

# RBI<sup>®</sup> BASEBALL

INSTRUCTION BOOKLET



# TENGEN

MANUFACTURED  
By TENGEN



**OBJECT OF THE GAME/GAME DESCRIPTION:** *First there was RBI Baseball. It set the standard as the first baseball game for play on the NES® to use real players and their stats. Next came RBI Baseball 2, with 1989 stats, enhanced graphics and sound. Now there's RBI Baseball 3! You get 1990 numbers for the pros on all 26 teams — and more: You can play with all Division Champions from '83 through '89! Select your favorite team and create any lineup you want with a 24-player roster. It's time to play ball — pro ball!*

---



**PROBLEMS?** We recommend that you read this instruction booklet to learn and master the operation of this game. By doing so you'll have hours and hours of fun with your family and friends! Should you have any further problems or questions about playing this game or any of Tengen's games, please call a **Tengen game counselor** at (408) 433-3999 Monday through Friday from 8:30AM-6:00PM Pacific Time.

---



**PRECAUTIONS:** 1. This is a high precision game. It should not be stored in places that are very hot or cold. Never hit or drop it. Do not take it apart. 2. Avoid touching the connectors, do not get them wet or dirty. Doing so may damage the game. 3. Do not clean with benzene, paint thinner, alcohol or other such solvents. 4. Do not leave the game paused for a long time as the image may "burn" into the TV screen.

---

**TO ORDER OTHER GREAT GAMES FROM TENGEN, CALL: 1-800-2-TENGEN (1-800-283-6436)**

**RBI:** TM Atari Games Corporation. ©1987 Namco Ltd. ©1991 Tengen, Inc. All rights reserved.  
Nintendo and Nintendo Entertainment System are trademarks of Nintendo of America, Inc.

**Note:** In the interest of product improvement, specifications and design are subject to change without prior notice.

## TEGEN 90-DAY LIMITED WARRANTY

TEGEN warrants to the original purchaser of this software product that the medium on which this computer program is recorded is free from defects in material and workmanship for a period of ninety (90) days from date of purchase. TEGEN agrees to either repair or replace at its option, free of charge, any TEGEN software product. **Before any returns are accepted you must call our warranty department (408/473-9400) for a return authorization number.** You may then return the product postage paid, together with the return authorization number, sales slip or similar proof of purchase.

THIS WARRANTY IS NOT APPLICABLE TO NORMAL WEAR AND TEAR. THIS WARRANTY SHALL NOT BE APPLICABLE IF A DEFECT ARISES OUT OF ABUSE, UNREASONABLE USE, MISTREATMENT OR NEGLIGENCE OF THE SOFTWARE PRODUCT. THIS WARRANTY IS IN LIEU OF ALL OTHER WARRANTIES, WHETHER ORAL OR WRITTEN, EXPRESS OR IMPLIED. ANY IMPLIED WARRANTIES OF MERCHANTABILITY AND FITNESS FOR A PARTICULAR PURPOSE ARE HEREBY EXCLUDED. THIS WARRANTY IS LIMITED TO THE 90 DAY PERIOD DESCRIBED ABOVE AND IN NO EVENT SHALL TEGEN BE LIABLE FOR CONSEQUENTIAL OR INCIDENTAL DAMAGES RESULTING FROM THE BREACH OF ANY EXPRESS OR IMPLIED WARRANTIES RELATING TO THE SOFTWARE PRODUCT.

The provisions of this warranty are valid in the United States only. Some states do not allow limitations on how long an implied warranty lasts or exclusion of consequential or incidental damages, so the above limitations and exclusion may not apply to you. This warranty gives you specific legal rights, and you may also have other rights which vary from state to state.

Address all correspondence to: TEGEN Inc.  
Warranty Department  
P.O. Box 360782  
Milpitas, CA 95036-0782

## TABLE OF CONTENTS

1. INTRODUCTION .....	1
2. HOW TO START PLAY .....	1
Press START .....	1
Options.....	2
3. OFFENSE CONTROLS .....	4
At Bat .....	4
Base Running Control.....	4
Batter Time-Out Options.....	5
4. DEFENSE CONTROLS .....	6
Pitching .....	6
Fielding the Ball.....	7
Pitcher Time-Out Options.....	8
5. WATCH MODE .....	8
6. SERIES PLAY .....	9
7. TIPS.....	9
Pitching .....	9
Fielding.....	10
OFFICIAL 1990 ROSTERS & STATS.....	10
'83-'89 DIVISION CHAMPS ROSTERS & STATS....	20

# 1. INTRODUCTION

R.B.I. BASEBALL 3 simulates real baseball. Most of the rules and strategies of the actual game apply. Like a real game, you must bat, pitch, field, run and substitute players well to win. Each player has his own strengths and weaknesses based on his real-life numbers. For batters, the stats include his position, hitting ability, power, running speed and whether he is right- or left- handed. For pitchers, the stats include his control, pitching speed and stamina.

All the players in R.B.I. Baseball 3 were developed from two sets of actual pro stats: the 1990 teams and the Division Champions from 1983 through 1989. For example, a player who stole numerous bases and had a high batting average in real life will have a high speed in the game. A player with numerous home runs in real life will have a good power rating in the game.

Beat all the other teams and you'll earn the chance to challenge a "secret" super team!

## 2. HOW TO START PLAY:

### Press START :

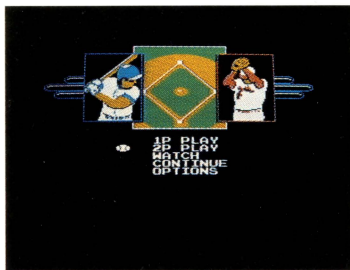
**1P:** Play against the computer.

**2P:** Competitive play.

**Watch:** Computer vs. Computer (as if on TV).

**Continue:** To enter a password.

**Options:** To select more options.



## Options:

To change the current option setting, press START .

To cycle among options, press SELECT.

**Music:** *On:* Background music plays during the game.

*Off:* No background music plays.

*Note:* The sound effects are always present.

**Flash:** *On:* The two infielders you have control over flash (useful when you are first learning to play).

*Off:* No fielders flash.

**Computer Player:** Hard/Easy (how well the computer plays).

### Computer Forfeit:

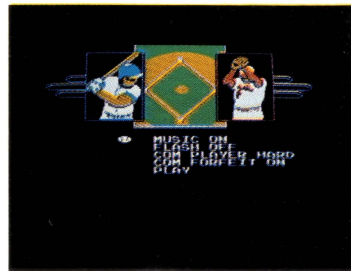
*On:* The computer forfeits if losing by twelve runs.

*Off:* The computer does not forfeit.

*Note:* A player may forfeit at any time.

**Play:** Return to the main menu.

**To Select Your Teams and Year:** Move the cursor with the control pad. Press the A button to select the team and year chosen. Select your computer team this way as well. Press B button to choose a different year. The years that are available are shown directly below the team selected. Not all years are available since years before 1990 are for Division Champions only.

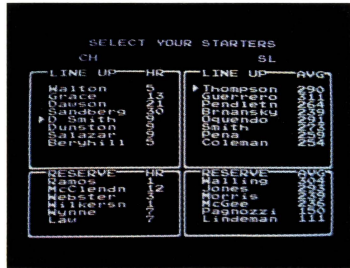


**To Select Your Starting Pitcher:** Move the cursor up and down with the control pad. Press the A button to select.

**Note:** You may use up to 5 pitchers per game: 1 starter and 4 relievers or 2 starters and 3 relievers. The first 4 pitchers on your roster are the starters. A starting pitcher may only appear in every other game of a series.



*Select your starting pitcher.*



*Select your starting lineup.*

**To select your starting line up:** Move the cursor with the control pad.

Press the B button to change players.

Press the A button to accept the current lineup.

### 3. OFFENSE CONTROLS

#### At Bat:

**Control Pad:** Move the batter's position in batter's box.

**A Button:** Batter swings bat. Press and hold for a complete swing. To bunt, press and release the button quickly or press SELECT, as described in the following paragraph.

**SELECT:** Use this button to bunt. Press once and the batter prepares to bunt. If the pitch is a ball, press again and the bat will return to the ready position. If you press too late, a strike will be called.

#### Base Running Control:

**Control Pad:**

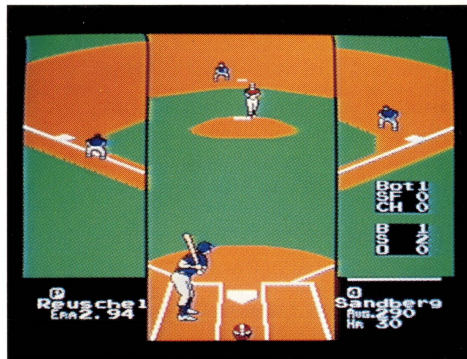
*Up:* Runner advances/returns to second base.

*Down:* Runner advances to home plate.

*Left:* Runner advances/returns to third base.

*Right:* Runner returns to first base.

**B Button:** Base runner advances to the next base. Choose the base you want the runner to run to with the control pad and press the B button. Use the B button to steal bases, for hit and run plays, squeeze plays and to advance extra bases during a play.



**A Button:** Base runner returns to the previous base. Choose the base you want the runner to run to with the control pad and press the A button.

**Note:** The base runners run as soon as the ball is hit. When a fly ball is hit, it is up to the player to make all of the base runners go back to avoid a double or triple play. After tagging up you may advance to the next base.

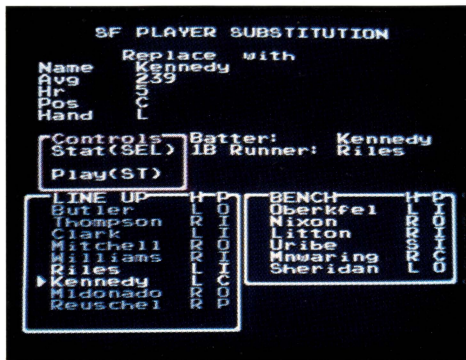
### Batter Time-Out Options:

(Press START to call time out)

**Substitutions:** Change a batter or base runner.

Move the cursor to the player you wish to remove from the lineup. His name appears at the top of the screen under the word "Replace." Now move the cursor to the player you wish to insert from the bench. His name appears to the right of the person he is replacing. To view additional stats press SELECT. Press the A button to substitute or START to not substitute.

**Switch Hit:** Switch to left or right handed batting. Only batters who are switch hitters may do this.





**Scoreboard:** Press the B button to see the scoreboard. On the scoreboard, press SELECT to choose the forfeit option. Press SELECT to change yes or no, then press START to accept.

**Play Ball:** Return to play.

**Instant Replay:** See a replay of the last play. Some plays cannot be viewed by instant replay.

## 4. DEFENSE CONTROLS

### Pitching:

#### Control pad:

*Up:* Knuckleball/Sinkerball.

*Down:* Fastball.

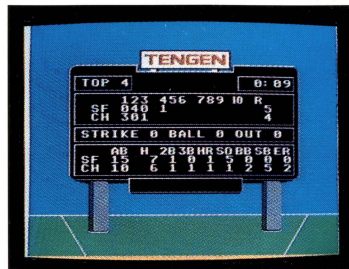
*Left:* Curveball left.

*Right:* Curveball right.

*No direction:* normal speed pitch.

**A Button:** Pitches the ball — Press the A button to throw the pitch. On the control pad, press and hold up, down, or neither before you press the A button to decide the speed of the ball. Once the windup starts the speed cannot be changed. After the ball is pitched, you can control the ball by moving the control pad left and right.

**B Button:** Attempt to pick off a base runner. You may choose which base the pitcher throws to by using the control pad and pressing the B button. If the pitcher is looking at a base, he throws to that base.



Note: The pitcher can move side to side on the mound before the pitch is thrown by using the control pad.

## Fielding the Ball:

**Control Pad:** Moves your fielders —

*Up, Down, Left or Right*

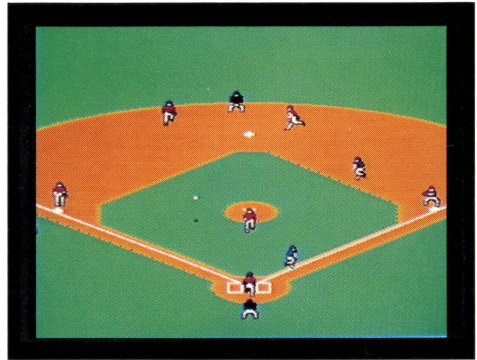
After the ball is hit, you may dive and jump for the ball. Press either the A or B button when the ball is near you and you will jump or dive. You can jump when the ball is in the air. You can dive when the ball is on the ground (or very near it). Press right or left to control the direction of the dive. By timing this correctly, you can field many balls you would not normally be able to field.

**Note:** It is possible, though very hard, to make a diving catch. You must wait until the ball is very close to the ground before attempting to dive. Otherwise, you will jump and miss the ball.

**A Button:** Press the button to throw the ball. The ball will be thrown to the base you select with the control pad. When no base is selected, the ball will be thrown to first base.

**B Button:** Press the button to run to a base. The fielder will run to the base you select with the control pad. When no base is selected, the fielder will run to first base.

**Errors:** Occasionally a fielder will “bobble” the ball, or make a poor throw. Avoid throwing the ball to a base when a fielder has left the position. The chance for errors is based on the team you are using.



## Pitcher Time-Out Options:

(Press START to call time out)

**New Pitcher:** Move the cursor to the desired relief pitcher. Press the A button to do the substitution.

**New Fielder:** Move the cursor to the player that you wish to remove from the line up. His name appears at the top of the screen, below the word "Replace." Now move the cursor to the player you wish to insert from the bench. His name appears to the right of the person he is replacing. You may view additional stats by pressing SELECT. Press the A button to substitute, START to not substitute.

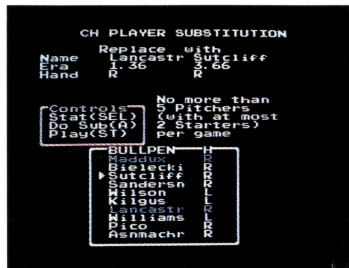
**Scoreboard:** Press the B button to see the scoreboard.

**Play Ball:** Return to play.

**Instant Replay:** See an instant replay of the last play that happened. Some plays cannot be viewed by instant replay.

## 5. WATCH MODE:

Watch mode can also be used as a training mode or a manager mode. In this mode, the computer will control the game, but you may participate by using the controller. To manage, let the computer play the game while you substitute players and tell runners to steal bases. To train, let the computer do the difficult fielding while you do the easier fielding.



## 6. SERIES PLAY:

In a series, remember that a starting pitcher may only appear as often as every other game. If you use all the best starting pitchers in your first game, they will not be available in the second.

In two-player mode, you play a seven-game series.

In single-player mode, you can play a seven-game series by:

- selecting one team from NL and one from AL.
- selecting the computer team to be a division winner.

In single-player mode, you can play all the teams in the 1990 league by:

- selecting the computer team to be a 1990 team and selecting another team from the same league for yourself.

- selecting the computer team to be a 1990 team and selecting a division winning team from the same league for yourself (just don't pick the same team as the computer's).

## 7. TIPS:

### Pitching:

The starting pitchers have more stamina than the relievers.

Always be aware of your pitcher's ability because he gets tired. Keep an eye on the MPH and how much you can move the pitches sideways. The fastball and sinkerball will use more stamina than normal pitches. When pitching to the computer, especially when a power hitter is batting, try not to throw it over the middle of the plate. Using the sinkerball when you have two strikes on the hitter is often a good tactic.

### Fielding:

You should begin to move your fielders as soon as the ball is hit. Get familiar with the starting points of all your fielders so you can react quickly instead of waiting until you see the fielders. When a pop fly is hit, you need to predict where the ball is going to land and move the closest player to that destination. Adjustments should be made based on the shadow of the ball and the tone that indicates the height of the ball.

**Batting:** Do not stand still in the batter's box. Try to fool the pitcher as to where you will be when the ball is thrown.

# OFFICIAL 1990 PLAYER ROSTERS & STATS

**General:** If you replace a fielder with a player that is not from the same position, there will be more errors.

Never talk to your opponent about the last pitch. If he knows what you think about it, that may help him on the next pitch.

When you throw or run with the ball, choose the desired direction with the control pad, then press the A or B button. Do not select a direction, let go, then press the A or B button. You must hold the control pad arrow until after the button is pressed.

**Hint:** For a quick throw, press a direction and the A button at the same time.

RBI Baseball 3 uses real players and their actual 1990 stats. Now, you get to make all the decisions a real manager makes! These stats will help you decide which players to put on the field to get a winning combination. You saw how the pros did in real life. Now see what they can do when you manage them!

## ABBREVIATION KEYS

### BATTERS

HAND- RIGHT, LEFT, OR SWITCH HITTER

AVG- BATTING AVERAGE

HR- HOME RUNS

SPD- SPEED (HIGHER THE BETTER)

POS - POSITION, OUTFIELD, INFIELD, OR  
CATCHER

### PITCHERS

HAND- LEFT OR RIGHT, SIDEARM

ERA- EARNED RUN AVERAGE.

## (BA) BALTIMORE

### BATTERS

PLAYER	HAND	AVG	HR	SPD	POS
FINLEY	L	256	3	13	O
ORSULAK	L	269	11	8	O
MILLIGAN	R	265	20	7	I
C.RIPKEN	R	250	21	7	I
DEVEREAX	R	240	12	9	O
B.RIPKEN	R	291	3	7	I
TETTLETN	S	223	15	6	C
WRTHNGTN	R	226	8	6	I
HORN	L	248	14	5	O
HULETT	R	255	3	6	I
SEGUI	S	244	2	5	I
MELVIN	R	243	5	5	C
ANDERSON	L	231	3	11	O
KITTLE	R	231	18	5	O

### PITCHERS

PLAYER	HAND	ERA
MCDONALD	R	2.43
JOHNSON	R	4.10
HARNISCH	R	4.34
MILACKI	R	4.46
OLSON	R	2.42
WILLIMSN	R	2.21
SCHILLNG	R	2.54
PRICE	L	3.58
MITCHELL	R	4.64
BALLARD	L	4.93
HOLTON	R	4.50

## (CA) CALIFORNIA

### BATTERS

PLAYER	HAND	AVG	HR	SPD	POS
POLONIA	L	335	2	14	O
RAY	S	277	5	5	I
WINFIELD	R	267	21	5	O
PARRISH	R	268	24	5	C
JOYNER	L	268	8	6	I
HOWELL	L	228	8	6	I
SCHOFIELD	R	255	1	6	I
WHITE	S	217	1	13	O
DOWNING	R	273	14	5	O
DAVIS	S	265	12	6	O
HILL	S	264	3	6	I
VENABLE	L	259	4	8	O
BICHETTE	R	255	15	7	O
STEVENS	L	214	7	6	I

### PITCHERS

PLAYER	HAND	ERA
FINLEY	L	2.40
MCCASKLL	R	3.25
LANGSTON	L	4.40
ABBOTT	L	4.51
HARVEY	R	3.22
FRASER	R	3.08
EICHHOM	R	3.08
FETTERS	R	4.12
GRAHE	R	4.98
BLYLEVEN	R	5.24
YOUNG	L	3.52

## (CH) CHICAGO (NTL)

### BATTERS

PLAYER	HAND	AVG	HR	SPD	POS
GRACE	L	309	9	10	I
DUNSTON	R	262	17	14	I
DAWSON	R	310	27	12	O
SANDBERG	R	306	40	13	I
D.SMITH	L	262	6	9	O
SALAZAR	R	254	12	7	I
WALTON	R	263	2	10	O
GIRARDI	R	270	1	9	C
DASCENZO	S	253	1	12	I
CLARK	L	275	5	10	O
VILLANUV	R	272	7	6	C
RAMOS	R	265	2	6	I
WILKERSN	S	220	0	5	I
WYNNE	L	204	4	8	O

### PITCHERS

PLAYER	HAND	ERA
MADDUX	R	3.46
HARKEY	R	3.26
BIELECKI	R	4.93
NUNEZ	R	6.53
WILLIAMS	L	3.93
ASSNMCHR	L	2.80
LONG	R	4.37
LANCASTR	R	4.62
WILSON	L	4.79
PICO	R	4.79
KRAMER	R	4.50

## (AT) ATLANTA

### BATTERS

PLAYER	HAND	AVG	HR	SPD	POS
L.SMITH	R	305	9	11	O
GANT	R	303	32	15	O
TREADWAY	L	283	11	7	I
JUSTICE	L	282	28	9	I
PRESLEY	R	242	19	5	I
BLAUSER	R	269	8	7	I
OLSON	R	262	7	6	C
MCDOWELL	L	243	7	9	O
CABRERA	R	277	7	6	I
GREGG	L	264	5	8	O
LEMKE	S	226	0	5	I
THOMAS	R	219	5	5	I
WHITT	L	172	2	5	C
KREMERS	L	111	1	6	I

### PITCHERS

PLAYER	HAND	ERA
LEBRNDT	L	3.16
SMOLTZ	R	3.85
GLAVINE	L	4.28
AVERY	L	5.64
MERCKER	L	3.17
CASTILLO	L	4.23
PARRETT	R	4.64
GRANT	R	4.73
P.SMITH	R	4.79
CLARY	R	5.67
HESKETH	L	5.29

## (BO) BOSTON

### BATTERS

PLAYER	HAND	AVG	HR	SPD	POS
BOGGS	L	302	6	7	I
GREENWLL	L	297	14	9	O
BRUNNSKY	R	267	15	9	O
BURKS	R	296	21	11	O
JO.REED	R	289	5	6	I
QUINTANA	R	287	7	5	I
PENA	R	263	7	8	C
RIVERA	R	225	7	6	I
MARSHALL	R	286	4	6	O
ROMINE	R	272	2	8	O
NAEHRING	R	271	2	5	I
EVANS	R	249	13	7	O
MARZANO	R	241	0	5	C
BARRETT	R	226	0	6	I

### PITCHERS

PLAYER	HAND	ERA
CLEMENS	R	1.93
BODDICKR	R	3.36
KIECKER	R	3.97
HARRIS	R	4.00
REARDON	R	3.16
BOLTON	R	3.38
GRAY	R	4.44
LAMP	R	4.68
JE.REED	R	4.82
GARDNER	R	4.89
MURPHY	L	6.32

## (CH) CHICAGO (AMER)

### BATTERS

PLAYER	HAND	AVG	HR	SPD	POS
JOHNSON	L	285	1	17	O
SOSA	R	233	15	16	O
CALDERON	R	273	14	14	O
FISK	R	285	18	8	C
GUILLEN	L	279	1	10	I
VENTURA	L	249	5	5	I
FLETCHER	R	242	4	6	I
MARTINEZ	R	224	4	7	I
PASQUA	L	274	13	14	O
THOMAS	R	330	7	7	I
BRADLEY	R	256	4	11	O
KARKOVIC	R	246	6	6	C
LYONS	L	192	1	6	I
GREBECK	R	168	1	5	I

### PITCHERS

PLAYER	HAND	ERA
HIBBARD	L	3.16
KING	R	3.28
MCDOWELL	R	3.82
PEREZ	R	4.61
THIGPEN	R	1.83
JONES	R	2.31
EDWARDS	L	3.22
PALL	R	3.32
PATTERSN	L	3.39
FERNANDZ	R	3.80
RADINSKY	L	4.82

## (MT) MONTREAL

### BATTERS

PLAYER	HAND	AVG	HR	SPD	POS
RAINES	S	287	9	18	O
DESHILDS	L	289	4	17	I
WALLACH	R	296	21	9	I
GALARRAG	R	256	20	9	I
WALKER	L	241	19	12	O
DA.MRTNZ	L	279	11	11	O
FITZGRLD	R	243	9	9	C
OWEN	S	234	5	9	I
GRISSOM	R	257	3	13	O
NOBOA	R	266	0	7	I
NIXON	S	251	1	18	O
ALDRETE	L	242	1	6	O
FOLEY	L	213	0	5	I
SANTOVEN	R	190	6	5	C

### PITCHERS

PLAYER	HAND	ERA
BOYD	R	2.93
DE.MRTNZ	R	2.95
GARDNER	R	3.42
GROSS	R	4.57
BURKE	R	2.52
FREY	L	2.10
RUSKIN	L	2.75
SAMPEN	R	2.99
SCHMIDT	R	4.31
HALL	L	5.09
MOHORCIC	R	3.23

## (CI) CINCINNATI

### BATTERS

PLAYER	HAND	AVG	HR	SPD	POS
MORRIS	L	340	7	9	I
LARKIN	R	301	7	15	I
SABO	R	270	25	13	I
DAVIS	R	260	24	12	O
DUNCAN	R	306	10	12	I
O'NEILL	L	270	16	9	O
HATCHER	R	276	5	15	O
OLIVER	R	231	8	5	C
DORAN	S	300	7	12	I
OESTER	S	299	0	5	I
BRAGGS	R	299	6	7	O
WINNNGHM	L	256	3	11	O
BENZINGR	S	253	5	7	I
REED	L	251	3	5	C

### PITCHERS

PLAYER	HAND	ERA
RIJO	R	2.70
ARMSTRNG	R	3.42
JACKSON	L	3.61
BROWNING	L	3.80
DIBBLE	R	1.74
MYERS	L	2.08
CHARLTON	L	2.74
LAYANA	R	3.49
BIRTSAS	L	3.86
MAHLER	R	4.28
SCUDDER	R	4.90

## (CL) CLEVELAND

### BATTERS

PLAYER	HAND	AVG	HR	SPD	POS
BROWNE	S	267	6	10	I
JACOBY	R	293	14	7	I
ALOMAR	R	290	9	7	C
MALDONAD	R	273	22	7	O
BAERGA	S	260	7	5	I
SNYDER	R	233	14	6	O
FERMIN	R	256	1	7	I
WEBSTER	S	252	12	12	O
C.JAMES	R	299	12	7	O
COLE	L	300	0	16	O
D.JAMES	L	274	1	7	I
BROOKENS	R	266	1	5	I
SKINNER	R	252	2	4	C
JEFFERSN	S	231	2	7	O

### PITCHERS

PLAYER	HAND	ERA
CANDIOTT	R	3.65
FARRELL	R	4.28
SWINDELL	L	4.40
S.VALDEZ	R	4.75
JONES	R	2.56
OLIN	R	3.41
OROSCO	L	3.90
C.WARD	R	4.25
WALKER	R	4.88
SHAW	R	6.66
SEANEZ	R	5.60

## (KC) KANSAS CITY

### BATTERS

PLAYER	HAND	AVG	HR	SPD	POS
BRETT	L	329	14	11	I
WILSON	S	290	2	13	O
EISENCRH	L	280	5	11	O
JACKSON	R	272	28	10	O
SEITZER	R	275	.6	9	I
MACFARLN	R	255	6	7	C
WHITE	R	216	2	6	I
STILLWLL	S	249	3	9	I
MCRAE	S	286	2	8	O
TARTABLL	R	268	15	6	O
TABLER	R	272	1	5	O
PERRY	L	254	8	11	O
PECOTA	R	242	5	9	I
BOONE	R	239	0	6	C

### PITCHERS

PLAYER	HAND	ERA
APIER	R	2.76
SABERHGN	R	3.27
GORDON	R	3.73
S.DAVIS	R	4.74
FARR	R	1.98
MONTGMRY	R	2.39
MCGAFFGN	R	3.09
CRAWFORD	R	4.16
GUBICZA	R	4.50
M.DAVIS	L	5.11
AQUINO	R	3.16



## (NY) NEW YORK (NTL)

### BATTERS

PLAYER	HAND	AVG	HR	SPD	POS
MAGADAN	L	328	6	8	I
BOSTON	L	273	12	12	O
JOHNSON	S	244	23	15	I
STRWBRRY	L	277	37	10	O
MCRYNLDS	R	269	24	9	O
JEFFERIS	S	283	15	9	I
SASSER	L	307	6	5	C
ELSTER	R	207	9	6	I
CARREON	R	250	10	6	O
HERR	S	261	5	9	I
MILLER	R	258	1	11	O
TEUFEL	R	246	10	5	I
MARSHALL	R	239	6	5	I
O'MALLEY	L	223	3	5	I

### PITCHERS

PLAYER	HAND	ERA
VIOLA	L	2.67
CONE	R	3.23
FERNANDZ	L	3.46
GOODEN	R	3.83
FRANCO	L	2.53
SCHATZDR	L	2.20
PENA	R	3.20
WHITHRST	R	3.29
OJEDA	L	3.66
DARLING	R	4.50
MACHADO	R	3.15

## (HO) HOUSTON

### BATTERS

PLAYER	HAND	AVG	HR	SPD	POS
CANDAEL	S	286	3	10	I
BIGGIO	R	276	4	13	C
STUBBS	L	261	23	12	O
DAVIS	R	251	22	9	I
WILSON	R	245	10	5	O
YELDING	R	254	1	19	O
RAMIREZ	R	261	2	9	I
CAMINITI	S	242	4	9	I
ANTHONY	L	192	10	8	O
DAVIDSON	R	292	1	5	O
OBBERKFL	L	207	1	6	I
GEDMAN	L	202	1	6	C
ROHDE	R	184	0	5	I
YOUNG	S	175	1	8	O

### PITCHERS

PLAYER	HAND	ERA
PORTUGAL	R	3.62
DESHAIES	L	3.78
SCOTT	R	3.81
GULLCKSN	R	3.82
SMITH	R	2.39
ANDERSEN	R	1.95
DARWIN	R	2.21
AGOSTO	L	4.29
HERNANDZ	R	4.62
CLANCY	R	6.51
MEYER	R	2.21

## (DT) DETROIT

### BATTERS

PLAYER	HAND	AVG	HR	SPD	POS
TRAMMELL	R	304	14	9	I
MOSEBY	L	248	14	12	O
PHILLIPS	S	251	8	12	I
FIELDER	R	277	51	5	I
WHITAKER	L	237	18	9	I
HEATH	R	270	7	8	C
LEMON	R	258	5	8	O
WARD	R	256	9	7	O
FRYMAN	R	297	9	7	I
BERGMAN	L	278	2	7	O
SHEETS	L	261	10	6	O
SHELBY	S	248	4	8	O
SALAS	L	232	9	5	C
COLES	R	209	3	6	I

### PITCHERS

PLAYER	HAND	ERA
MORRIS	R	4.51
PETRY	R	4.45
TANANA	L	5.31
ROBINSON	R	5.96
HENNEMAN	R	3.05
NUNEZ	R	2.24
GLEATON	L	2.94
GIBSON	L	3.05
PARKER	R	3.58
TERRELL	R	4.54
SEARCY	L	4.66

**(MN) MINNESOTA****BATTERS**

PLAYER	HAND	AVG	HR	SPD	POS
MACK	R	326	8	10	O
GLADDEN	R	275	5	14	O
PUCKETT	R	298	12	8	O
HRBEK	L	287	22	7	I
GAETTI	R	229	16	9	I
HARPER	R	294	6	7	C
GAGNE	R	235	7	9	I
LIRIANO	S	234	1	11	I
LARKIN	S	269	5	8	O
ORTIZ	R	335	0	6	C
BUSH	L	243	6	6	O
NEWMAN	S	242	0	9	I
MANRIQUE	R	237	5	6	I
MOSES	S	221	1	7	O

**PITCHERS**

PLAYER	HAND	ERA
ERICKSON	R	2.87
GUTHRIE	L	3.79
TAPANI	R	4.07
ANDERSON	L	4.53
AGUILERA	R	2.76
LEACH	R	3.20
BERENGUR	R	3.41
DRUMMOND	R	4.35
SMITH	R	4.81
WEST	L	5.10
WAYNE	L	4.19

**(PH) PHILADELPHIA****BATTERS**

PLAYER	HAND	AVG	HR	SPD	POS
DYKSTRA	L	325	9	15	O
DAULTON	L	268	12	8	C
V.HAYES	L	261	17	11	O
MURPHY	R	245	24	9	O
THON	R	255	8	10	I
C.HAYES	R	258	10	6	I
JORDAN	R	241	5	6	I
READY	R	244	1	7	I
KRUK	R	291	7	11	O
LAKE	R	250	0	5	C
MORANDIN	L	241	1	6	I
BOOKER	L	221	0	7	I
CAMPUSAN	R	212	2	6	O
HOLLINS	S	184	5	5	I

**PITCHERS**

PLAYER	HAND	ERA
MULHLLND	L	3.34
DEJESUS	R	3.74
COMBS	L	4.07
RUFFIN	L	5.38
GRIMSLEY	R	3.30
BOEVER	R	3.36
AKERFLDS	R	3.77
MCDOWELL	R	3.86
CARMAN	L	4.15
HOWELL	R	4.64
GREENE	R	5.08

**(LA) LOS ANGELES****BATTERS**

PLAYER	HAND	AVG	HR	SPD	POS
JAVIER	L	304	3	12	O
SAMUEL	R	242	13	15	I
SHARPRSN	R	297	3	10	I
MURRAY	S	330	26	9	I
DANIELS	L	296	27	7	O
BROOKS	R	266	20	6	O
SCIOSCIA	L	264	12	6	C
GRIFFIN	S	210	1	8	I
GIBSON	L	260	8	13	O
HARRIS	L	304	2	10	I
GWYNN	L	284	5	6	O
GONZALEZ	R	232	2	8	O
HATCHER	R	212	0	5	I
DEMPSEY	R	195	2	5	C

**PITCHERS**

PLAYER	HAND	ERA
MARTINEZ	R	2.92
MORGAN	R	3.75
BELCHER	R	4.00
VALENZUL	L	4.59
HOWELL	R	2.18
CREWS	R	2.77
GOTT	R	2.90
HARTLEY	R	2.95
NEIDLNGR	R	3.28
COOK	L	3.92
AASE	R	4.97

## (MW) MILWAUKEE

### BATTERS

PLAYER	HAND	AVG	HR	SPD	POS
SHEFFIELD	R	294	10	13	I
MOLITOR	R	285	12	13	I
SURHOFF	L	276	6	12	C
DEER	R	209	27	6	O
YOUNT	R	247	17	12	O
FELDER	S	274	3	12	O
BROCK	L	248	7	6	I
SPIERS	L	242	2	9	I
PARKER	L	289	21	7	O
HAMILTON	L	295	1	11	O
DIAZ	R	271	0	7	I
GANTNER	L	263	0	12	I
VAUGHN	R	220	17	8	O
SVEUM	S	197	1	5	I

### PITCHERS

PLAYER	HAND	ERA
ROBINSON	R	2.91
HIGUERA	L	3.76
BOSIO	R	4.00
KNUDSON	R	4.12
CRIM	R	3.47
MIRABELL	R	3.97
KRUEGER	L	3.98
PLESAC	L	4.43
EDENS	R	4.45
NAVARRO	R	4.46
FOSSAS	L	6.44

## (OK) OAKLAND

### BATTERS

PLAYER	HAND	AVG	HR	SPD	POS
R.HNDRSN	R	325	28	19	O
LANSFORD	R	268	3	11	I
CANSECO	R	274	37	12	O
MCGWIRE	R	235	39	5	I
D.HNDRSN	R	271	20	6	O
STEINBCH	R	251	9	5	C
WEISS	S	265	2	9	I
RANDOLPH	R	257	1	9	I
BAINES	L	284	16	5	O
JOSE	S	264	8	9	O
HASSEY	L	213	5	5	C
GALLEGO	R	206	3	7	I
JENNINGS	L	192	2	6	O
BLNKNSHP	R	191	0	8	I

### PITCHERS

PLAYER	HAND	ERA
STEWART	R	2.56
WELCH	R	2.95
SANDERSN	R	3.88
MOORE	R	4.65
ECKERSLY	RS	0.61
NELSON	R	1.57
KLINK	L	2.04
HONEYCTT	L	2.70
BURNS	R	2.97
YOUNG	L	4.85
HARRIS	R	3.48

## (PI) PITTSBURGH

### BATTERS

PLAYER	HAND	AVG	HR	SPD	POS
BREAM	L	270	15	9	I
VANSLYKE	L	284	17	12	O
BONILLA	S	280	32	9	O
BONDS	L	301	33	18	O
SLAUGHT	R	300	4	6	C
BELL	R	254	7	10	I
LIND	R	261	1	9	I
KING	R	245	14	6	I
BACKMAN	S	292	2	9	I
REYNOLDS	S	288	0	9	O
LAVALLIR	L	258	3	6	C
REDUS	R	247	6	10	I
MARTINEZ	R	240	10	6	I
MCCLENDN	R	164	2	6	O

### PITCHERS

PLAYER	HAND	ERA
DRABEK	R	2.76
SMITH	L	2.55
HEATON	L	3.45
SMILEY	L	4.64
LANDRUM	R	2.13
TOMLIN	L	2.55
PATTERSN	L	2.95
KIPPER	L	3.02
BELINDA	R	3.55
WALK	R	3.75
POWER	R	3.66

**(SD) SAN DIEGO****BATTERS**

PLAYER	HAND	AVG	HR	SPD	POS
ROBERTS	S	309	9	17	0
GWYNN	L	309	4	13	0
ALOMAR	S	287	6	13	1
JA.CLARK	R	266	25	7	1
CARTER	R	232	24	12	0
SANTIAGO	R	270	11	9	C
PAGLIARL	L	254	7	6	1
TEMPLETN	S	248	9	6	1
JE.CLARK	R	366	5	7	1
JACKSON	R	257	3	7	0
ABNER	R	245	1	6	0
LYNN	L	240	6	6	0
PARENT	R	222	3	5	0
STEPHNSN	L	209	4	6	1

**PITCHERS**

PLAYER	HAND	ERA
WHITSON	R	2.60
HURST	L	3.14
BENES	R	3.60
RASMUSN	L	4.51
LEFFERTS	LS	2.52
HARRIS	R	2.30
RODRIGUZ	L	2.83
SCHIRALD	R	4.41
LILLIQST	L	5.31
SHOW	R	5.76
HAMMAKER	L	4.36

**(NY) NEW YORK (AMER)****BATTERS**

PLAYER	HAND	AVG	HR	SPD	POS
SAX	R	260	4	17	1
KELLY	R	285	15	17	0
BARFIELD	R	246	25	7	0
MAAS	L	252	21	6	1
LEYRITZ	R	257	5	6	1
AZOCAR	L	248	5	8	0
ESPINOZA	R	224	2	6	1
GEREN	R	213	8	5	C
BALBONI	R	192	17	4	1
CERONE	R	302	2	5	C
HALL	L	258	12	6	0
MATTNGLY	L	256	5	5	1
NOKES	L	248	11	6	0
VELARDE	R	210	5	6	1

**PITCHERS**

PLAYER	HAND	ERA
LAPPOINT	L	4.11
LEARY	R	4.11
CARY	L	4.19
HAWKINS	R	5.37
RIGHETTI	L	3.57
PLUNK	R	2.72
GUTTERMAN	L	3.39
ROBINSON	R	3.45
WITT	R	4.00
CADARET	L	4.15
MILLS	R	4.10

**(SE) SEATTLE****BATTERS**

PLAYER	HAND	AVG	HR	SPD	POS
REYNOLDS	S	252	5	15	1
BRILEY	L	246	5	11	0
E.MARTNZ	R	302	11	6	1
GRIFFYJR	L	300	22	12	0
COTTO	R	259	4	12	0
VIZQUEL	S	247	2	7	1
O'BRIEN	L	224	5	5	1
VALLE	R	214	7	5	C
DAVIS	L	283	17	6	0
BUHNER	R	276	7	6	1
JONES	R	260	6	6	0
LEONARD	R	251	10	6	0
BRUMLEY	S	224	0	5	1
BRADLEY	L	223	1	5	C

**PITCHERS**

PLAYER	HAND	ERA
HANSON	R	3.24
YOUNG	L	3.51
JOHNSON	L	3.65
HOLMAN	R	4.03
SCHOOLER	R	2.25
SWIFT	R	2.39
COMSTOCK	L	2.89
SWAN	L	3.64
JACKSON	R	4.54
HARRIS	R	4.74
KNACKERT	R	6.51

## (SL) ST. LOUIS

### BATTERS

PLAYER	HAND	AVG	HR	SPD	POS
COLEMAN	S	292	6	20	O
MCGEE	S	335	3	14	O
GUERRERO	R	281	13	5	I
ZEILE	R	244	15	7	C
PENDLETN	S	230	6	8	I
O.SMITH	S	254	1	14	I
OQUENDO	S	252	1	7	I
THOMPSON	L	218	6	14	O
HUDLER	R	282	7	13	I
LANKFORD	L	286	3	10	O
PAGNOZZI	R	277	2	5	C
WILSON	R	248	0	5	I
WALLING	L	220	1	5	O
JONES	L	219	1	6	I

### PITCHERS

PLAYER	HAND	ERA
TUDOR	L	2.40
MAGRANE	L	3.59
B.SMITH	R	4.27
DELEON	R	4.43
L.SMITH	R	2.10
NIEDENFR	R	3.46
TEWKSBRY	R	3.47
DAYLEY	L	3.56
DIPINO	L	4.56
TERRY	R	4.75
HORTON	R	4.93

## (SF) SAN FRANCISCO

### BATTERS

PLAYER	HAND	AVG	HR	SPD	POS
BUTLER	L	309	3	19	O
THOMPSON	R	245	15	11	I
CLARK	L	295	19	9	I
MITCHELL	R	290	35	7	O
WILLIAMS	R	277	33	8	I
KENNEDY	L	277	2	5	C
KINGERY	L	295	0	9	O
URIBE	S	248	1	9	I
LEACH	R	293	2	5	O
BASS	S	252	7	7	O
CARTER	R	254	9	5	C
LITTON	R	245	1	6	O
PARKER	R	243	2	8	O
RILES	L	200	8	7	I

### PITCHERS

PLAYER	HAND	ERA
BURKETT	R	3.79
WILSON	L	4.00
GARRELT	R	4.15
ROBINSON	R	4.57
BRANTLEY	R	1.56
THURMOND	L	3.34
DOWN	R	3.43
REUSCHEL	R	3.93
LACOSS	R	3.94
BEDROSIN	RS	4.20
OLIVERAS	R	2.77

## (TO) TORONTO

### BATTERS

PLAYER	HAND	AVG	HR	SPD	POS
FERNANDZ	S	276	4	16	I
GRUBER	R	274	31	7	I
BELL	R	265	21	6	O
MCGRIFF	L	300	35	7	I
FELIX	S	263	15	12	O
BORDERS	R	286	15	6	C
WILSON	S	265	3	13	O
LEE	S	243	6	7	I
OLERUD	L	265	14	6	O
MULLINKS	L	289	2	7	I
WHITEN	R	273	2	7	O
MYERS	L	236	5	5	C
HILL	R	231	12	9	O
WILLIAMS	R	161	0	9	O

### PITCHERS

PLAYER	HAND	ERA
STIEB	R	2.93
BLACK	L	3.57
KEY	L	4.25
STOTLMYR	R	4.34
HENKE	R	2.17
WELLS	L	3.14
WARD	R	3.45
ACKER	R	3.83
WILLS	R	4.73
CERUTTI	L	4.76
CANDELAR	L	3.95

## (TX) TEXAS

### BATTERS

PLAYER	HAND	AVG	HR	SPD	POS
FRANCO	R	296	11	14	I
PETTIS	S	239	3	17	O
SIERRA	S	280	16	9	O
INCAVIGL	R	233	24	6	O
PALMEIRO	L	319	14	8	I
BUECHELE	R	215	7	6	I
HJUSON	L	240	0	9	I
PETRALLI	L	255	0	5	C
DAUGHRTY	S	300	6	5	O
JO.RSSLL	R	273	2	6	C
REIMER	L	260	2	6	O
STANLEY	R	249	2	6	C
COOLBAGH	R	200	2	6	I
KUNKEL	R	170	3	7	I

### PITCHERS

PLAYER	HAND	ERA
WITT	R	3.36
RYAN	R	3.44
BROWN	R	3.60
HOUGH	R	4.07
ARNSBERG	R	2.15
ROGERS	L	3.13
MIELKE	R	3.73
JE.RSSLL	R	4.26
JEFFCOAT	L	4.47
MOYER	L	4.66
BARFIELD	L	4.67

## (NA) NATIONAL

### BATTERS

PLAYER	HAND	AVG	HR	SPD	POS
DYKSTRA	S	325	9	15	O
SABO	R	270	25	13	I
CLARK	L	295	19	9	I
SANDBERG	R	306	40	13	I
MITCHELL	R	290	35	7	O
DAWSON	R	310	27	12	O
SANTIAGO	R	270	11	9	C
O.SMITH	S	254	1	14	I
STRWBRRY	L	277	37	10	O
BONDS	L	301	33	18	O
BONILLA	S	280	32	9	O
ALOMAR	S	287	6	13	I
WILLIAMS	R	277	33	8	I
OLSON	R	262	7	5	C

### PITCHERS

PLAYER	HAND	ERA
ARMSTRNG	R	3.42
MARTINEZ	R	2.92
DE.MRTNZ	R	2.95
VIOLA	L	2.67
SMITH	R	2.39
BRANTLEY	R	1.56
DIBBLE	R	1.74
MYERS	L	2.08
FRANCO	L	2.53
HEATON	L	3.45
HEATON	L	3.45

## (AM) AMERICAN

### BATTERS

PLAYER	HAND	AVG	HR	SPD	POS
R.HNDRSN	R	325	28	19	O
SAX	R	260	4	17	I
GRIFFYJR	L	300	22	12	O
CANSECO	R	274	37	12	O
MCGWIRE	R	235	39	6	I
C.RIPKEN	R	250	21	7	I
BOGGS	L	302	6	7	I
ALOMAR	R	290	9	7	C
FIELDER	R	277	51	5	I
FRANCO	R	296	11	14	I
GRUBER	R	274	31	7	I
BELL	R	265	21	6	O
BURKS	R	296	21	11	O
PARRISH	R	268	24	5	C

### PITCHERS

PLAYER	HAND	ERA
WELCH	R	2.95
STIEB	R	2.93
SABERHGN	R	3.27
FINLEY	L	2.40
THIGPEN	R	1.83
ECKERSLY	RS	0.61
CLEMENS	R	1.93
JOHNSON	L	3.65
JONES	R	2.31
OLSON	R	2.42
OLSON	R	2.42

# '83-'89 DIVISION CHAMPIONS: PLAYER ROSTERS & STATS

In addition to all 26 1990 pro teams (plus All Stars), RBI Baseball 3 also gives you the Division Champions from 1983 through 1989. Now, you can finally answer those age-old questions of how the best teams from different years would have fared against each other!

## ABBREVIATION KEYS

### BATTERS

HAND- RIGHT, LEFT, OR SWITCH HITTER

AVG- BATTING AVERAGE

HR- HOME RUNS

SPD- SPEED (HIGHER THE BETTER)

POS - POSITION, OUTFIELD, INFIELD, OR  
CATCHER

### PITCHERS

HAND- LEFT OR RIGHT, SIDEARM

ERA- EARNED RUN AVERAGE.

## (TO) TORONTO '89

### BATTERS

PLAYER	HAND	AVG	HR	SPD	POS
FERNANDZ	S	257	11	12	I
LIRIANO	S	263	5	10	I
GRUBER	R	290	18	9	I
MCGRIFF	L	269	36	7	I
BELL	R	297	18	6	O
FELIX	S	258	9	11	O
WHITT	L	262	11	6	C
MOSEBY	L	221	11	12	O
WILSON	S	298	2	9	O
LEE	S	260	3	6	I
MULINIKS	L	238	3	5	I
LAWLESS	R	229	0	10	O
BB.CATCH	R	170	1	6	C
BORDERS	R	257	3	5	C

### PITCHERS

PLAYER	HAND	ERA
STEIB	R	3.35
KEY	L	3.88
CERUTTI	L	3.07
FLANAGAN	L	3.93
HENKE	R	1.92
WELLS	L	2.40
WILLS	R	3.66
STOTLMYR	R	3.88
WARD	R	3.77
CASTILLO	L	6.11
UNKNOWN	R	5.13

## (OK) OAKLAND '89

### BATTERS

PLAYER	HAND	AVG	HR	SPD	POS
R.HNDRSN	R	274	12	20	O
LANSFORD	R	336	2	15	I
CANSECO	R	269	17	7	O
MCGWIRE	R	231	33	5	I
PARKER	L	264	22	3	O
STEINBCH	R	273	7	4	C
PHILLIPS	S	262	4	6	I
GALLEGO	R	252	3	7	I
D.HNDRSN	R	250	15	7	O
PHELPS	L	242	7	5	I
JAVIER	S	248	1	9	O
WEISS	S	233	3	8	I
BLNKNSHP	R	232	1	9	I
HASSEY	L	226	5	6	C

### PITCHERS

PLAYER	HAND	ERA
STEWART	R	3.32
MOORE	R	2.61
DAVIS	R	4.36
WELCH	R	3.00
BURNS	R	2.24
ECKERSLY	RS	1.56
YOUNG	L	3.73
NELSON	R	3.26
HONEYCUT	L	2.35
CORSI	R	1.88
UNKNOWN	R	1.88

**(CH) CHICAGO '89 (NTL)****BATTERS**

PLAYER	HAND	AVG	HR	SPD	POS
WALTON	R	293	5	12	O
DUNSTON	R	278	9	11	I
DAWSON	R	252	21	7	O
SANDBERG	R	290	30	10	I
GRACE	L	314	13	9	I
D.SMITH	L	324	9	8	O
BERYHILL	R	257	5	4	C
LAW	R	235	7	6	I
MCCLENDEN	R	286	12	8	C
WYNNE	L	243	7	7	O
SALAZAR	S	282	9	5	I
RAMOS	R	263	1	6	I
WEBSTER	S	257	3	10	O
WILKERSEN	S	244	1	7	I

**PITCHERS**

PLAYER	HAND	ERA
MADDUX	R	2.95
BIELECKI	R	3.14
SUTCLIFF	R	3.66
SANDERSON	R	3.94
WILLIAMS	L	2.76
WILSON	L	4.20
KILGUS	L	4.39
LANCASTER	R	1.36
PICO	R	3.77
ASNMACHR	L	3.99
UNKNOWN	L	3.99

**(SF) SAN FRANCISCO '89****BATTERS**

PLAYER	HAND	AVG	HR	SPD	POS
BUTLER	L	283	4	14	O
THOMPSON	R	241	13	9	I
CLARK	L	333	23	8	I
MITCHELL	R	291	47	6	O
WILLIAMS	R	202	18	5	I
RILES	L	278	7	6	I
KENNEDY	L	239	5	5	C
MALDONDO	R	217	9	6	O
OBERKFEL	L	269	2	5	I
NIXON	R	265	1	9	O
LITTON	R	252	4	6	I
URIBE	S	221	1	7	I
MNWARNG	R	210	0	6	C
SHERIDAN	L	205	3	7	O

**PITCHERS**

PLAYER	HAND	ERA
REUSCHEL	R	2.94
GARRELT	R	2.28
ROBINSON	R	3.43
KNEPPER	L	5.13
LACOSS	R	3.17
BRANTLEY	R	4.07
HAMMAKER	L	3.76
BDROSIAN	RS	2.87
DD.PITCH	L	3.46
LEFFERTS	LS	2.69
UNKNOWN	L	2.69

**(BO) BOSTON '88****BATTERS**

PLAYER	HAND	AVG	HR	SPD	POS
BURKS	R	294	18	14	O
BOGGS	L	355	5	8	I
EVANS	R	293	21	9	O
GREENWLL	L	325	22	12	O
REED	R	293	1	5	I
BARRETT	R	283	1	8	I
BENZINGR	S	254	13	6	I
GEDMAN	L	231	9	3	C
JR.LEFT	R	264	15	6	O
OWEN	S	249	5	4	I
CERONE	R	269	3	4	C
ROMINE	R	192	1	6	O
PARRISH	R	259	7	3	I
ANDERSON	L	230	0	7	O

**PITCHERS**

PLAYER	HAND	ERA
CLEMMENS	R	2.93
HURST	L	3.66
GARDENER	R	3.50
BOYD	R	5.34
SMITH	R	2.80
STANLEY	R	3.19
BODDICKR	R	2.63
LAMP	R	3.48
SMITHSON	R	5.97
BOLTON	L	4.75
ELLSWRTH	R	6.75



**(OK) OAKLAND '88****BATTERS**

PLAYER	HAND	AVG	HR	SPD	POS
POLONIA	L	292	2	13	O
LANSFORD	R	279	7	14	I
CANSECO	R	307	42	16	O
MCGWIRE	R	260	32	4	I
HENDERSN	R	304	24	6	O
STEINBCH	R	265	9	6	C
WEISS	S	250	3	7	I
HUBBARD	R	255	3	6	I
PARKER	L	257	12	4	O
DB.LEFT	R	220	7	3	O
GALLEGO	R	209	2	5	I
JAVIER	S	257	2	12	O
HASSEY	L	257	7	5	C
PHILLIPS	S	203	2	6	I

**PITCHERS**

PLAYER	HAND	ERA
STEWART	R	3.23
WELCH	R	3.64
DAVIS	R	3.70
YOUNG	L	4.14
ECKERSLY	RS	2.35
CADARET	L	2.89
PLUNK	R	3.00
BURNS	R	3.16
NELSON	R	3.06
HONEYCTT	L	3.50
ONTIVERS	R	4.61

**(NY) NEW YORK '88 (NTL)****BATTERS**

PLAYER	HAND	AVG	HR	SPD	POS
DYKSTRA	L	270	8	14	O
JOHNSON	S	230	24	12	I
MCRYNLDS	R	288	27	12	O
STRWBRRY	L	269	39	14	O
HERNANDZ	L	276	11	5	I
BACKMAN	S	303	0	8	I
CARTER	R	242	11	5	C
ELSTER	R	214	9	6	I
WILSON	S	296	8	12	O
MAGADAN	L	277	1	3	I
TEUFEL	R	234	4	3	I
LM.LEFT	R	147	0	6	O
SASSER	S	285	1	4	C
LYONS	L	231	0	4	O

**PITCHERS**

PLAYER	HAND	ERA
CONE	R	2.22
GOODEN	R	3.19
DARLING	R	3.25
FERNANDZ	L	3.03
MYERS	L	1.72
MCDOWELL	R	2.63
LEACH	R	2.54
OJEDA	L	2.88
NUNEZ	R	4.50
MCCLURE	L	4.09
WEST	L	3.00

**(LA) LOS ANGELES '88****BATTERS**

PLAYER	HAND	AVG	HR	SPD	POS
SAX	R	277	5	17	I
SHELBY	S	263	10	12	O
MARSHALL	R	277	20	7	O
GIBSON	L	290	25	14	O
STUBBS	L	233	8	9	I
HAMILTON	R	236	6	5	I
GRIFFIN	S	199	1	9	I
SCIOSCIA	L	257	3	3	C
DEMPSY	R	251	7	4	C
ANDERSON	R	249	2	7	I
DAVIS	L	196	2	8	O
HEEP	L	242	0	5	O
HATCHER	R	293	1	3	O
TW.THIRD	R	249	3	5	I

**PITCHERS**

PLAYER	HAND	ERA
HERSHISR	R	2.26
LEARY	R	2.91
BELCHER	R	2.91
VALENZUL	L	4.24
HOWELL	R	2.08
PENA	R	1.91
OROSCO	L	2.72
HOLTON	R	1.70
JT.PITCH	L	2.41
CREWS	R	3.14
HILLEGAS	R	4.13

**(DT) DETROIT '87****BATTERS**

PLAYER	HAND	AVG	HR	SPD	POS
TRAMMELL	R	343	28	12	I
SHERIDAN	L	259	6	12	O
GIBSON	L	277	24	13	O
DE.FIRST	L	257	34	7	I
WHITAKER	L	265	16	11	I
NOKES	L	289	32	6	C
LEMON	R	277	20	6	O
BROOKENS	R	241	13	9	I
BM.LEFT	R	279	14	6	I
HEATH	R	281	8	4	C
BERGMAN	L	273	6	7	I
LH.LEFT	R	324	9	6	O
JG.LEFT	L	202	2	3	O
COLES	R	181	4	5	I

**PITCHERS**

PLAYER	HAND	ERA
MORRIS	R	3.38
TERRELL	R	4.05
TANANA	L	3.91
ROBINSON	R	5.37
KING	R	4.89
HERNANDZ	L	3.67
HENNEMAN	R	2.98
DA.PITCH	R	1.53
PETRY	R	5.61
SNELL	R	3.96
NOLES	R	4.50

**(MN) MINNESOTA '87****BATTERS**

PLAYER	HAND	AVG	HR	SPD	POS
PUCKETT	R	332	28	10	O
GLADDEN	R	249	8	13	O
BRUNANSK	R	259	32	9	O
HRBEK	L	285	34	7	I
GAETTI	R	257	31	9	I
GAGNE	R	265	10	9	I
LOMBRDZZ	R	238	8	8	I
LAUDNER	R	191	16	5	C
RS.SECND	S	275	8	6	I
BUSH	L	253	11	9	O
NEWMAN	S	221	0	12	I
DAVIDSON	R	267	1	12	O
LARKIN	S	266	4	6	I
BUTERA	R	171	1	3	C

**PITCHERS**

PLAYER	HAND	ERA
VIOLA	L	2.90
BYLEVEN	R	4.01
LS.PITCH	R	4.37
SMITHSON	R	5.94
REARDON	R	4.48
BERENGUR	R	3.94
ATHERTON	R	4.54
GF.PITCH	R	4.98
JN.PITCH	R	6.26
SCHATZDR	L	6.39
SMITH	R	4.96

**(SL) ST.LOUIS '87****BATTERS**

PLAYER	HAND	AVG	HR	SPD	POS
COLEMAN	S	289	3	20	O
SMITH	S	303	0	17	I
MCGEE	S	285	11	13	O
CLARK	R	286	35	5	I
PENDLETN	S	286	12	12	I
FORD	L	285	3	12	O
HERR	S	263	2	11	I
PENA	R	214	5	9	C
LINDEMAN	R	208	8	7	O
OQUENDO	S	286	1	7	O
MORRIS	L	261	3	12	O
LAKE	R	251	2	6	C
TB.THIRD	L	277	0	9	I
JOHNSON	L	220	0	12	O

**PITCHERS**

PLAYER	HAND	ERA
COX	R	3.88
MATHEWS	L	3.73
FORSCH	R	4.32
MAGRANE	L	3.54
WORRELL	R	2.66
RH.PITCH	L	3.82
DAYLEY	L	2.66
JT.PITCH	L	3.84
DAWLEY	R	4.47
PERRY	L	4.39
LT.PITCH	R	4.84

**(SF) SAN FRANCISCO '87****BATTERS**

PLAYER	HAND	AVG	HR	SPD	POS
THOMPSON	R	262	10	12	I
LEONARD	R	280	19	12	O
MITCHELL	R	306	15	9	I
CLARK	L	308	35	9	I
DAVIS	S	250	24	10	O
MALDONAD	R	292	20	9	O
BB.CATCH	R	267	18	9	C
URIBE	S	291	5	11	I
ALDRETE	L	325	9	8	O
CS.THIRD	R	249	11	6	I
EM.LEFT	L	252	4	10	O
MELVIN	R	199	11	3	C
WILLIAMS	R	188	8	8	I
HS.THIRD	L	267	1	6	I

**PITCHERS**

PLAYER	HAND	ERA
DOWNNS	R	3.63
LACOSS	R	3.68
HAMMAKER	L	3.58
KRUKOW	R	4.80
GARRELS	R	3.22
J.ROBNSN	R	2.79
DD.PITCH	L	3.20
D.ROBNSN	R	2.74
LEFFERTS	LS	3.23
REUSCHEL	R	4.32
DAVIS	L	4.71

**(BO) BOSTON '86****BATTERS**

PLAYER	HAND	AVG	HR	SPD	POS
BARRETT	R	286	4	11	I
BOGGS	L	357	8	5	I
BB.FIRST	L	267	18	8	I
EVANS	R	259	26	7	O
JR.LEFT	R	324	20	5	O
ARMAS	R	264	11	6	O
GEDMAN	L	258	16	4	C
QUINNONS	R	237	2	7	I
DB.LEFT	R	238	31	6	O
ROMERO	R	212	2	6	I
LYONS	L	250	1	9	O
OWEN	S	183	1	9	I
SULLIVAN	R	193	1	3	C
GREENWLL	L	128	0	3	I

**PITCHERS**

PLAYER	HAND	ERA
CLEMENS	R	2.48
HURST	L	2.99
BOYD	R	3.78
NIPPER	R	5.38
STANLEY	R	4.37
JS.PITCH	L	4.84
SCHIRALD	R	1.41
CRAWFORD	R	3.92
GARDNER	R	4.38
JS.PITCH	R	4.94
BROWN	R	5.34

**(CA) CALIFORNIA '86****BATTERS**

PLAYER	HAND	AVG	HR	SPD	POS
PETTIS	S	258	5	18	O
SCHOFIELD	R	249	13	13	I
JOYNER	L	290	22	8	I
MILLER	R	228	0	7	I
DOWNING	R	267	20	8	O
WHITE	S	235	1	9	O
BOONE	R	222	7	6	C
WILFONG	L	219	3	6	I
RYAL	L	363	2	6	O
POLIDOR	R	263	0	5	O
MCLEMORE	S	250	0	4	I
WOODROE	R	364	15	4	I
HOWELL	L	272	4	8	I
JN.CATCH	L	221	1	6	C

**PITCHERS**

PLAYER	HAND	ERA
WITT	R	2.84
MCCASKLL	R	3.36
LUGO	R	3.80
CANDELAR	L	2.55
FRASER	R	4.31
MC.PITCH	R	4.00
RANGER	L	5.41
SUCAL	L	3.14
RONIKMAN	R	4.84
LASHER	R	2.87
FINLEY	L	3.30

## (NY) NEW YORK '86 (NTL)

### BATTERS

PLAYER	HAND	AVG	HR	SPD	POS
DYKSTRA	L	295	8	15	O
WILSON	S	289	9	14	O
BACKMAN	S	320	1	10	I
STRWBRRY	L	259	27	14	O
ELSTER	R	167	0	6	C
MAZILLI	S	276	2	6	I
HERNANDZ	L	310	13	6	I
MAGADEN	L	333	0	3	I
MITCHELL	R	277	12	7	O
TUEFEL	R	247	4	5	I
JOHNSON	S	245	10	9	I
HEEP	L	282	5	7	O
LYONS	R	300	0	6	O
EH.CATCH	R	265	4	3	C

### PITCHERS

PLAYER	HAND	ERA
GOODEN	R	2.84
OJEDA	L	2.57
FERNANDZ	L	3.52
DARLING	R	2.81
MCDOWELL	R	3.02
OROSCO	L	2.33
MYERS	L	4.22
SISK	R	3.06
AGUILERA	R	3.88
LEACH	R	2.70
LYNCH	R	0.00

## (HO) HOUSTON '86

### BATTERS

PLAYER	HAND	AVG	HR	SPD	POS
DORAN	S	276	6	17	I
HATCHER	R	258	6	16	O
BASS	S	311	20	13	O
DAVIS	R	265	31	7	I
WALLING	L	312	13	5	I
LOPES	R	235	1	7	O
MIZEROCK	R	189	1	4	C
THON	R	248	3	8	I
TG.THIRD	L	300	1	10	I
DRIESSEN	L	292	1	7	I
PENA	R	207	0	15	O
PUHL	L	244	3	7	O
PANKOVTS	R	283	1	7	I
BAILEY	S	176	4	5	C

### PITCHERS

PLAYER	HAND	ERA
SCOTT	R	2.22
KNEPPER	L	3.14
DESHAIES	L	3.25
RYAN	R	3.34
SMITH	R	2.73
KERFELD	R	2.59
LOPEZ	R	3.46
ANDERSEN	R	2.78
DARWIN	R	2.32
KNUDSEN	R	4.22
DIPINO	L	3.57

## (TO) TORONTO '85

### BATTERS

PLAYER	HAND	AVG	HR	SPD	POS
GARCIA	R	282	8	14	I
FERNANDZ	S	289	2	12	I
MOSEBY	L	259	18	16	O
BELL	R	275	28	13	O
BARFIELD	R	289	27	14	O
WU.FIRST	L	275	15	9	I
MULLINKS	L	295	10	6	I
WHITT	L	245	19	7	C
GO.THIRD	R	313	7	6	I
FIELDER	R	311	4	6	O
LEE	S	200	0	4	I
LM.SECND	L	212	2	6	O
WEBSTER	S	250	0	4	O
LEACH	L	200	0	5	C

### PITCHERS

PLAYER	HAND	ERA
KEY	L	3.00
DA.PITCH	R	3.45
STEIB	R	2.48
CLANCY	R	3.78
HENKE	R	2.03
CAUDILL	R	2.99
ACKER	R	3.23
LAVELLE	L	3.10
LAMP	R	3.32
MUSSELMN	R	4.47
FLIER	R	3.88

## (KC) KANSAS CITY '85

### BATTERS

PLAYER	HAND	AVG	HR	SPD	POS
WILSON	S	278	4	19	O
SMITH	R	257	6	16	O
BRETT	L	335	30	9	I
BALBONI	R	243	36	6	I
FW.SECND	R	249	22	9	I
MOTLEY	R	222	17	7	O
JS.CATCH	R	245	10	6	C
OC.SHORT	R	204	2	7	I
HM.LEFT	R	259	14	3	O
JO.FIRST	L	267	4	6	I
QUIRK	L	281	0	3	O
BANCALAN	S	188	1	5	I
SHERIDAN	L	228	3	9	O
PHILBROOK	L	283	3	4	C

### PITCHERS

PLAYER	HAND	ERA
SABERHGN	R	2.87
LEIBRNDT	L	2.69
JACKSON	L	3.42
BLACK	L	4.33
QUSNBRRY	RS	2.37
HUISMANN	R	1.93
FARR	R	3.11
GUBICZA	R	4.06
DIENES	L	4.08
FREDRICKS	R	3.87
LACOSS	R	5.09

## (SL) ST. LOUIS '85

### BATTERS

PLAYER	HAND	AVG	HR	SPD	POS
MCGEE	S	353	10	20	O
COLEMAN	S	267	1	20	O
VANSLYKE	L	259	13	16	O
CLARK	R	281	22	6	I
HERR	S	302	8	14	I
SMITH	S	276	6	14	I
PENDLTN	S	240	5	12	I
HARPER	R	250	0	8	C
TL.LEFT	R	280	4	6	O
NIETO	R	225	0	5	C
SMITH	R	260	0	5	I
FORD	L	300	0	3	O
DEJESUS	R	222	0	5	I
LAWLESS	R	207	0	6	I

### PITCHERS

PLAYER	HAND	ERA
JT.PITCH	L	1.93
COX	R	2.88
JA.PITCH	R	3.40
NA.PITCH	R	5.59
BOEVER	R	4.41
DAYLEY	L	2.76
WORRELL	R	2.91
RH.PITCH	L	2.91
FORSCH	R	3.90
CAMPBLL	R	3.50
PERRY	L	0.00

## (LA) LOS ANGELES '85

### BATTERS

PLAYER	HAND	AVG	HR	SPD	POS
SAX	R	279	1	14	I
DUNCAN	S	244	6	16	I
MARSAHLL	R	293	28	7	O
GUERRERO	R	320	33	9	O
BROCK	L	251	21	6	I
KL.CENTR	L	268	12	10	O
SCIOSCIA	L	296	7	7	C
ABDERSON	R	199	4	7	I
MALDONAD	R	225	5	5	O
BREAM	L	132	3	3	C
BADGELY	R	263	4	7	I
STUBBS	L	222	0	5	I
RW.LEFT	R	333	0	9	O
REYNOLDS	R	292	0	7	O

### PITCHERS

PLAYER	HAND	ERA
HERSHISR	R	2.03
WELCH	R	2.31
VALENZUL	L	2.45
JR.PITCH	L	2.92
NIDENFUR	R	2.71
HOWE	L	4.91
HONEYCTT	L	3.42
HOLTON	R	9.00
HOWELL	R	3.77
PENA	R	8.31
POWELL	L	5.22

**(DT) DETROIT '84****BATTERS**

PLAYER	HAND	AVG	HR	SPD	POS
TRAMMELL	R	314	14	12	I
BERGMAN	L	273	7	8	I
LEMON	R	287	20	9	O
GIBSON	L	282	27	15	O
JOHNSON	S	248	12	9	I
WHITAKER	L	289	13	7	I
LH.LEFT	R	280	7	9	O
PARRISH	R	237	33	6	C
DE.LEFT	L	232	16	6	O
BROOKENS	R	246	5	9	I
BG.FIRST	R	287	5	7	I
JG.LEFT	L	267	8	4	O
LAGA	L	245	0	5	O
DL.CATCH	L	284	12	6	C

**PITCHERS**

PLAYER	HAND	ERA
PETRY	R	3.24
MORRIS	R	3.60
BERENQR	R	3.48
SCHERRER	L	1.89
HERNANDZ	L	1.92
LOPEZ	R	2.94
BLAIR	R	3.75
ONEAL	R	3.38
MASON	R	4.50
WILLIS	R	7.31
MONGE	L	4.25

**(KC) KANSAS CITY '84****BATTERS**

PLAYER	HAND	AVG	HR	SPD	POS
WILSON	S	301	2	18	O
SHERIDAN	L	283	8	12	O
MOTLEY	R	284	15	10	O
BALBONI	R	244	28	5	I
FW.SECND	R	271	17	9	I
BRETT	L	284	13	6	I
SLAUGHT	R	264	4	6	C
OC.SHORT	R	282	1	9	I
JO.FIRST	L	298	9	7	O
UW.SECND	S	224	1	4	I
HM.LEFT	R	303	3	6	O
DAVIS	R	147	2	7	C
WEBBER	L	265	4	5	I
BB.SHORT	S	194	2	5	I

**PITCHERS**

PLAYER	HAND	ERA
BLACK	L	3.12
LEIBRNDT	L	3.63
SABERHGN	R	3.48
GUBICZA	R	4.05
QUSNBRRY	RS	2.64
ULMAN	L	4.28
BRIHTON	R	4.28
HUJSMANN	R	4.20
JACKSON	L	4.26
SMITH	L	5.89
WILLS	R	5.11

**(CH) CHICAGO '84 (NTL)****BATTERS**

PLAYER	HAND	AVG	HR	SPD	POS
LD.FIRST	L	279	23	13	I
SANDBERG	R	314	19	11	I
HATCHER	R	111	0	13	I
RC.THIRD	R	240	25	16	I
KM.RIGHT	R	279	16	12	O
BD.CENTR	R	278	3	7	O
GM.LEFT	R	291	14	12	O
DAVIS	R	256	19	13	C
COTTO	R	274	0	9	O
WILEFORD	R	222	3	10	I
BOSLEY	L	296	2	5	O
BB.SHORT	L	209	0	7	I
HALL	L	280	4	8	O
LAKE	S	194	1	4	C

**PITCHERS**

PLAYER	HAND	ERA
SUTCLIFF	R	2.69
ECKERSLY	RS	3.03
ST.PITCH	L	3.41
SANDERSN	R	3.14
SMITH	R	3.65
RB.PITCH	R	3.46
TS.PITCH	R	3.82
GF.PITCH	R	4.10
RM.PITCH	L	3.38
REUSCHEL	R	5.17
NOLES	R	5.15

**(SD) SAN DIEGO '84****BATTERS**

PLAYER	HAND	AVG	HR	SPD	POS
GWYNN	L	351	5	16	0
AW.SECND	S	258	3	20	I
MCREYNLD	R	278	20	8	0
NETTLES	L	228	20	4	I
PEART	R	274	11	6	I
MARTINEZ	R	250	13	6	0
KENNEDY	L	240	14	5	C
TEMLPTON	S	258	2	9	I
FLANNERY	L	273	2	7	I
SALAZAR	R	241	3	9	0
ROENICKE	S	300	1	11	0
HAMILTON	R	251	2	3	I
MONROE	R	179	0	3	I
BB.CATCH	L	185	1	3	C

**PITCHERS**

PLAYER	HAND	ERA
THURMOND	L	2.97
WHITSON	R	3.24
SHOW	R	3.48
BOOKER	R	3.30
GG.PITCH	R	2.90
LEFFERTS	LS	2.13
DD.PITCH	L	2.93
HARRIS	R	2.70
HAWKINS	R	4.68
DELEON	R	5.48
GEMON	L	4.76

**(BA) BALTIMORE '83****BATTERS**

PLAYER	HAND	AVG	HR	SPD	POS
MY.LEFT	S	167	0	10	0
JS.CENTR	L	255	0	9	0
RIPKEN	R	318	27	5	I
MURRAY	S	306	33	8	I
EPSTEIN	L	287	10	6	0
ROGERS	R	235	3	4	I
DEMPESEY	R	231	4	6	C
TC.THIRD	R	208	3	6	I
LESTATS	S	176	28	6	0
SHELBY	S	258	5	10	0
ROENICKE	R	260	19	5	0
DWYER	L	286	8	5	I
LOUIS	L	257	9	4	C
LS.SECND	R	254	3	8	I

**PITCHERS**

PLAYER	HAND	ERA
BODDICKR	R	2.77
MCGREGOR	L	3.18
FLANAGAN	L	3.30
DAVIS	R	3.59
T.MARTNZ	L	2.35
SS.PITCH	R	3.62
AR.PITCH	R	3.47
GEDDY	R	4.01
D.MARTNZ	R	5.53
TS.PITCH	R	6.09
BS.PITCH	R	2.91

**(CH) CHICAGO '83 (AMER)****BATTERS**

PLAYER	HAND	AVG	HR	SPD	POS
PARSONS	L	200	0	20	0
SKINNER	R	273	0	13	I
TP.FIRST	R	307	9	8	I
KITTLE	R	254	35	9	0
FISK	R	289	26	9	C
BAINES	L	280	20	8	0
V.LAW	R	243	4	8	I
HULETT	R	200	0	9	I
KUHL	R	205	22	6	C
GRANT	L	122	4	6	I
WALKER	L	270	10	7	0
FLETCHER	R	237	3	9	I
HAIRSTON	S	294	5	4	0
TB.SECND	S	262	2	6	I

**PITCHERS**

PLAYER	HAND	ERA
RD.PITCH	R	3.23
MEDIAN	R	2.86
FB.PITCH	L	3.35
GWIN	L	3.58
BAROJAS	R	2.47
LAMP	R	3.71
AGOSTO	L	4.10
BUEHRLE	R	3.37
RICE	L	6.78
HICKEY	L	5.23
GH.PITCH	L	7.50

## (PH) PHILADELPHIA '83

### BATTERS

PLAYER	HAND	AVG	HR	SPD	POS
HAYES	L	265	6	13	O
GM.LEFT	R	258	10	10	O
MATUZAK	L	275	4	11	I
LIFESON	R	245	30	9	I
BD.CATCH	R	236	15	4	C
DEJESUS	R	254	4	11	I
SAMUEL	R	277	2	8	O
JELTZ	R	125	0	9	I
STONE	L	250	0	9	O
GROSS	L	302	0	7	O
BD.LEFT	R	231	1	15	O
SANCHEZ	R	286	0	6	I
DAULTON	L	333	0	5	I
VIRGIL	R	214	6	3	C

### PITCHERS

PLAYER	HAND	ERA
ANDERSON	R	2.39
CARMEN	L	3.45
HUDSON	R	3.35
CARNAGE	R	3.61
HOLLAND	L	2.26
HERNANDEZ	L	3.29
REED	R	3.48
GROSS	R	3.56
BOOKER	L	3.55
LITTLE	R	4.72
SMITH	L	5.05

## (LA) LOS ANGELES '83

### BATTERS

PLAYER	HAND	AVG	HR	SPD	POS
SAX	R	281	5	19	I
KL.CENTR	L	281	17	14	O
MARSHALL	R	284	17	8	O
GUERRERO	R	298	32	13	I
BROCK	L	224	20	7	I
MALDANADO	R	194	1	8	O
REYNOLDS	S	236	2	9	I
SCOISCIA	L	314	1	6	C
GH.LEFT	R	111	0	10	O
BREAM	L	182	0	4	O
ROENICKE	S	221	2	6	O
ESPY	S	273	0	4	I
ANDERSON	R	165	1	8	I
JF.CATCH	R	250	2	5	C

### PITCHERS

PLAYER	HAND	ERA
WELCH	R	2.65
PENA	R	2.75
JR.PITCH	L	2.94
VALENZUL	L	3.75
HOWE	L	1.44
NIEDENFR	R	1.90
STEWART	R	2.96
HERSHISER	R	3.38
BH.PITCH	R	4.22
FERNANDEZ	L	6.00
HONEYCTT	L	5.77

**COMPLIANCE WITH FCC REGULATIONS:** This equipment generates and uses radio frequency energy and if not installed and used properly, that is, in strict accordance with the manufacturer's instructions, may cause interference to radio and television reception. It has been type tested and found to comply with the limits for a Class B computing device in accordance with the specifications in Subpart J of Part 15 of FCC Rules, which are designed to provide reasonable protection against such interference in a residential installation. However, there is no guarantee that interference will not occur in a particular installation. If this equipment does cause interference to radio or television reception, which can be determined by turning the equipment off and on, the user is encouraged to try to correct the interference by one or more of the following measures:

- Reorient the receiving antenna.
- Relocate the NES with respect to the receiver.
- Move the NES away from the receiver.
- Plug the NES into a different outlet so that computer and receiver are on different circuits.

If necessary, the user should consult the dealer or an experienced radio/television technician for additional suggestions. The user may find the following booklet prepared by the Federal Communications Commission helpful: **How to Identify and Resolve Radio-TV Interference Problems.**

This booklet is available from the U.S. Government Printing Office, Washington, D.C. 20402, Stock No. 004-000-00345-4.