

SCHEHERAZADE

THE MAGIC OF

NES — AS — USA ★  
CULTURE BRAIN USA, INC.



# SCHEHERAZADE

TM

INSTRUCTION BOOKLET



LICENSED BY NINTENDO  
FOR PLAY ON THE



ENTERTAINMENT  
SYSTEM



LICENSED BY NINTENDO®  
FOR PLAY ON THE

**Nintendo**  
ENTERTAINMENT  
SYSTEM®

Nintendo® and Nintendo Entertainment System® are trademarks of Nintendo of America Inc.

This official seal is your assurance that Nintendo® has reviewed this product and that it has met our standards for excellence in workmanship, reliability and entertainment value. Always look for this seal when buying games and accessories to ensure complete compatibility with your Nintendo Entertainment System®.

## PRECAUTIONS

- This is a high precision Game Pak. It should not be stored in places that are very hot or cold. Never hit it or drop it. Do not take it apart.
- Avoid touching the connectors. Do not get them wet or dirty. Doing so may damage the Game Pak and/or the Control Deck.
- Do not clean with benzene, paint thinner, alcohol or other such solvents.
- Store the Game Pak in its protective sleeve when not in use.
- To avoid eye strain, play the game at a reasonable distance from the T.V.
- Always turn the power off before inserting or removing the cartridge from the Nintendo Entertainment System®.
- When playing the game for long periods of time, it is recommended that you take a 10 to 20 minute break for every 2 hours of play.

**Nintendo recommends against using a rear projection television with your NES as image retention on the screen may occur.**

Thank you for purchasing CULTURE BRAIN'S "THE MAGIC OF SCHEHERAZADE™" for your Nintendo Entertainment System®. For maximum enjoyment, please read this Instruction Manual thoroughly before playing.

## CONTENTS

1. THE STORY OF "THE MAGIC OF SCHEHERAZADE" .....	4
2. LET'S START THE GAME! .....	8
3. HOW TO PLAY .....	12
4. THE ACTION SCREEN .....	14
5. ACTION MODE CONTROLS .....	16
6. VIEWING THE SUBSCREEN .....	18
7. AN ENEMY REGIMENT HAS APPEARED .....	21
8. FIGHTING THE DEMONS .....	26
9. YOUR ALLIES .....	28
10. MAGICS .....	30
11. ITEMS .....	36
12. WHAT'S THE ALALART SOLAR ECLIPSE? .....	39
13. IN THE TOWNS .....	40
14. OUTSIDE THE TOWN .....	42



# 1. THE STORY OF "THE

● AGES AGO, THE GREAT DEMON GORAGORA TURNED THE BEAUTIFUL WORLD OF ARABIA INTO A HOME FOR DEMONS.

One day, the legendary magician Isfa, using the power of the blue star of Airosche, defeated Goragora and sealed the demons underground. Peace returned to Arabia for a short time.

But once again, Arabia is in danger. To carry out his evil plans, the magician Sabaron has released the demons from their underground prison.



# MAGIC OF SCHEHERAZADE™

You've heard that there is a young magician, a descendent of Isfa, who has the power to defeat Sabaron. Do you remember? You are that magician.

You must defeat Sabaron, but how?

Your magical powers are gone, your memories have been erased, and your sweetheart, the princess Scheherazade,

has been imprisoned. Even worse, you've been thrown into a different time.

With the help of the Time Spirit Coronya, you must journey through the Time Door to defeat Sabaron and rescue Scheherazade. During your journey, you will meet allies who will help you to regain your magical powers.

This is where your journey begins.



I'M CORONYA, THE  
TIME SPIRIT. I WAS  
SEARCHING FOR YOU.  
ONLY YOU CAN BEAT  
SABARON. HELP US!

▶ YES  
NO

## ● “THE MAGIC OF SCHEHERAZADE” STORY CONSISTS OF FIVE CHAPTERS.

In the first four chapters, you must journey through different worlds to find a palace where a demon awaits you. In the final chapter you must defeat the evil Sabaron to bring peace back to Arabia.

As you travel through time to the past and the future, be sure to fight many enemies and look for allies. Fighting enemies will raise your ability levels and increase your strength. Allies will help you on your journey to battle the evil Sabaron and to rescue your sweetheart, Scheherazade.

- **Chapter 1**: The Water World, Mooroon  
The first world you visit is controlled by a water demon. What awaits you at the bottom of the “moving lake”?
- **Chapter 2**: The Desert World, Alalart  
The people of this world are being terrorized by the fearsome demon, Curly. Only by traveling back and forth through time will you be able to pass the Maze Desert and continue on your quest.
- **Chapter 3**: The Winter World, Samalkand  
Troll, the winter demon, will soon rule this world. You must defeat Troll to bring back the warmth of spring.
- **Chapter 4**: The Flower World, Celestern  
Salamander, the strongest demon known, has yet to be defeated. He is waiting for you. How will you defeat him?
- **Chapter 5**  
What will you find during the last part of your journey? What is the final mystery? You must find out on your own.



## 2. LET'S START THE GAME!



Insert “The Magic of Scheherazade” game pak into your NES control deck and turn on the power. You will see the title screen appear. Use the SELECT button to choose “**START**” (to play from the beginning) or “**CONTINUE**” (to continue a previous game). Use the control pad to choose “**SLOW**”, “**NORMAL**” or “**FAST**” text speed.



Next, press the START button. Enter your name or password by moving the cursor with the control pad and pressing the A button to select a letter. Your name may be up to four letters long. Press the START button to enter your name or password.



## ● CHOOSE YOUR CLASS

Before you set out on your journey, you must first choose your class. Select the desired class with the control pad, then press START to begin the game.

Some shopkeepers will offer discounts to characters of certain classes. When shopping, try all three classes, and be sure to look for the best deals. Also, certain allies won't join you unless your character is the right class. During the game, you may change your class at a mosque.

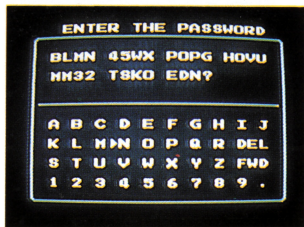


## ● FEATURES OF EACH CLASS:

- **Fighter** — The fighter is good at handling a sword. In his hands, a short sword is as effective as one twice as long. He can also reflect the enemy's bullets.
- **Saint** — The saint's offense isn't very good, but once he obtains a shield he can reflect the enemy's bullets from the front. If he has a special item, he can cross damage zones without getting hurt.
- **Magician** — His favored weapon is the rod. When he obtains more powerful rods, his attack ability will be greater than the other classes. He's also the strongest when fighting the boss demons.

Each class has special abilities and can master various different items.

## ● HOW TO CONTINUE AND USE THE PASSWORD



If you wish to stop playing in the middle of a game, go to a mosque or be defeated to get a password. The next time you play, select CONTINUE from the title screen.

Enter the password and press START to continue the last game. The password will return you to the town at the beginning of the chapter you were in when you last played.

## ● IF THE PASSWORD IS WRONG ...

If you enter the wrong password, you won't be able to continue your last game. Make sure that your password is correct.

You will be given three chances to enter your password. If you enter the wrong password three times, you will still start at the beginning of the world you were last in, but your items and powers may be different.



## 3. HOW TO PLAY



### ☆ GATHERING INFORMATION IS VERY IMPORTANT!

Your mission is to bring peace to Arabia, but this will require more than just fighting. You must learn what to do and where to go. Always write down what the townspeople tell you, and when you enter a new town, be sure to speak to all of the people you meet.

☆ **BEFORE THE JOURNEY ...** Be sure to go to a shop and buy some bread before you leave town, and always have your sword or magic rod in hand when you go. There are many monsters lurking outside the towns. You must be prepared or they will quickly defeat you.



### ☆ USE MAGIC AGAINST THE MORE POWERFUL ENEMIES!

Your magical powers, if used wisely, can be far more effective than your rod or sword. Even if you are not a **MAGICIAN**, your magic powers are still very strong.

## ● PLAYER LEVEL

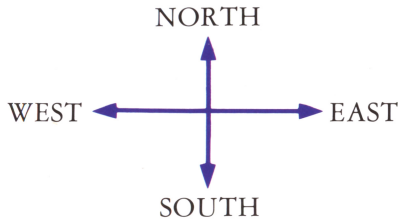
Every time you defeat an enemy, you will gain experience points. After gaining a certain number of experience points, your player level and strength will increase. As your player level increases, so will your Hit Points and Magic Points. In addition, your rod and sword will become more powerful, and you will learn new spells. The levels, magic points and hit points of your allies increase as yours do.

The powers of the BOLT TOR and FLAMOLL spells increase in three stages as your level increases. Also, as you progress the CORBOCK magic will change to SHRINK, then to CARABA.

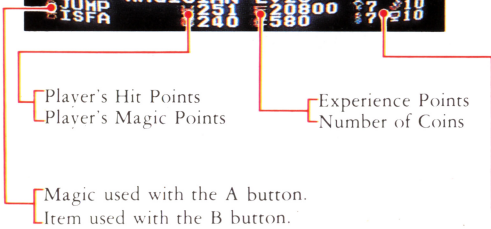
In each chapter, you may progress only to a certain level. Once you reach that level, you will earn no more experience points until you enter the next chapter.



# 4. THE ACTION SCREEN



The directions on the map.



○ **Hit Points (H. P.) :**

This is your life level. Your points will decrease when you get hit by an enemy. If your Hit Points reach 0 you will die. You can increase your Hit Points by eating bread or using magic. You can recover completely by staying at a hotel.

○ **Magic Points (M. P.) :**

This is the amount of magic you have. It decreases whenever you use magic. If your Magic Points reach 0, you won't be able to use your magic spells. You can recover some Magic Points by using mashroob. To recover all of your Magic Points, stay in a hotel or stand on a magic star.

○ **Experience Points :**

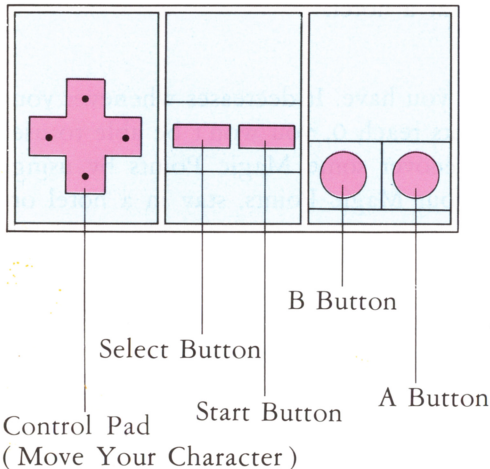
Gain experience points by defeating enemies. Upon reaching a certain number of points, your player level will increase.

○ **Player Level :**

See page 13 for a detailed explanation.



## 5. ACTION MODE CONTROLS



- START Change to the Select screen.
- SELECT Change to the Sub-screen.
- (A) To use the selected magic. Also to JUMP.
- (B) To use the selected item. Also to SPEAK or JUMP.



## ● THE SELECT SCREEN — HOW TO USE ITEMS AND MAGIC

Press the START button to change from the field map to the Select Screen. Use the control pad to move the cursor to the item or magic you want to use, then press the A button to select it. Your selection will appear in the window at the bottom of the screen. Press the START button to return to the field map. You have now selected that item for the A or B button. Use the item or magic by pressing the indicated button.

Magics Used With the **A** Button.

Items Used With the **B** Button.

(The first line shows the name of the rod you now have. The second line shows the name of the sword you now have.)





# 6. VIEWING THE SUBSCREEN

Number of Demons you have defeated. Upper Section: Normal Magic

Lower Section: Great Magic

Allies



Items you have

Number of troopers you have hired

Items you are wearing or holding

Your current debt

Space for the map

Current chapter

Number of remaining lives

Press the SELECT button to change from the field map to the Subscreen.

○ Your Allies . . .

Your present allies are indicated here. Allies who have died are indicated in monochrome.

○ Map . . .

You can use this item in palaces and mazes. Steps are indicated with



and the demon's room is marked by a ★ .

○ Magic . . .

This shows you what magic you can use.

○ Debt . . .

Your present debt. This amount includes interest.

## ● CONTROLLER OPERATION IN COMMAND MODE BATTLE

There are two modes of battle, Action and Command. In Command Mode, you and your allies may fight against enemies or use magic. You do not move in a Command Mode battle. In Action Mode, you fight one-on-one with the enemy.

Move the cursor with the control pad.

Use the A button to select a command indicated by the cursor.

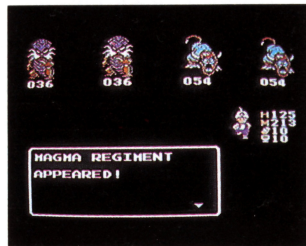
Use the B button to cancel a command you have selected.

If the ▽ appears, press the A button to advance to the next command.



## 7. AN ENEMY REGIMENT HAS APPEARED!

After leaving town, when you are walking on the field map, you may encounter groups of enemies. When this happens, the screen will change to Command Mode Battle.



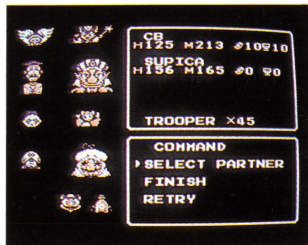
### ● COMMAND MODE OPTIONS :

- FIGHT — Fight the enemy.
- ESCAPE — Use this command if you don't want to fight. You won't always be able to get away.
- PEACE — You may be able to make peace with the enemy by paying the money they demand. If the enemies accept the payment, they will leave. Enemies will sometimes refuse to make peace.

## ● IF YOU WISH TO FIGHT, YOU CAN CHOOSE UP TO TWO ALLIES TO HELP YOU.

### ○ SELECT PARTNER

Move the cursor with the control pad to select from your allies displayed in the left side of the screen. Repeat this operation to select a second partner.



### ○ FORMATION

The formations you may make will be indicated on the screen. If you select a formation, the allies required for that formation will automatically be chosen. A formation can also be made by selecting the two required partners.

### ○ YOU FIGHT ALONE

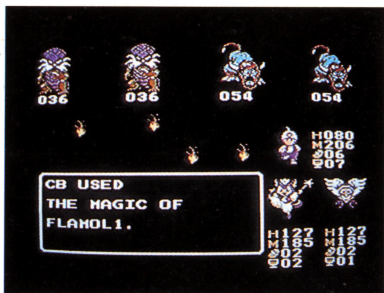
This lets you fight without the help of allies.

- After you select your allies, bread and mashroob will be distributed automatically.
- If you want to change the distribution of the portions or serve more, select YES when you are asked. Then, select BREAD or MASHROOB, then move the cursor to the desired allies' bread or mashroob. Use the A button to increase the shares or the B button to decrease the shares.
- If you have hired troopers, up to four at a time will automatically participate in the battle.
- You are now prepared to fight. Choose FIGHT to begin the battle.

- Once battle begins, enter the action or magic commands to fight.



- Use the TROOPER command to replace defeated troopers from those you have hired. Only four troopers can participate at a time.





## ● FORMATIONS AND COMBINED MAGIC

If you make a formation, you will be able to use Combined Magic with your allies.

If you choose certain formations against certain groups of enemies, the Combined Magic will be the most effective. (see p. 33)

Also, if you choose the right formation, your party's defense power will be increased.

If you want to use Combined Magic, choose MAGIC when it is your turn to attack. The available magic, including the Combined Magic, will be displayed.

- ※ You can learn what formations are the most effective against enemies at the Magic University in each chapter. Be sure to learn about formations.
- ※ The troopers will not fight when you use the Combined Magic.



## 8. FIGHTING THE DEMONS



You will fight the Demons in the action battle mode.

Press the **START** button to pause and choose an **ITEM** or **MAGIC** as shown in (1). Select with the **A** button.

(1)



The screen will then list the items or magic you can use. Not all items or magic will be listed. **Choose one with the A button.** The screen will then return to (1), allowing you to select again. Press **START** to return to the fighting screen.

(2)



## ● SOME DEMONS CAN BE DEFEATED ONLY WITH HELP FROM YOUR ALLIES.

Before fighting a demon, be sure that your allies are still alive and that they have enough H.P. If your allies are exhausted, stay at a hotel until they are rested, then try fighting again.

The rod is the most effective against the Demons. When you fight them, you'll be strongest if your CLASS is skilled with the rod.

To escape the Demon's field, ask for help from Kebabu, the Ring Spirit.



## 9. YOUR ALLIES



### ○ CORONYA

A girl in the form of a cat, she wears a crown. She can travel through time.



### ○ GAN MECA

An archaeologist in search of the glorious past, he doesn't consider himself a robot.



### ○ FARUK

A strong man who appears from a lamp.



### ○ SUPICA

A flying monkey who's full of mischief but is good at heart.



### ○ KEBABU

The ring spirit. She's precocious and prissy, and a bit of a shrew.



### ○ EPIN

The guardian of the town of Sudari. He's 700 years old and carries a strange whistle.



○ PUKIN

The cheerful prince of the forest.



○ RAINY

He's a coward, but his ability to send rain will be helpful.



○ MUSTAFA

He's a rude talker, but reliable. He's also pretty tight with money.



○ HASSAN

Your last ally, Hassan, has some wonderful magic. He can eat up the enemies.



○ GUBIBI

He can release those who have been transformed by magic. His treasures are gorgeous.



## 10. MAGIC

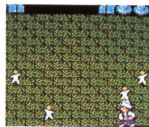


In command mode battle, you, the hero, can use some of the magic you have learned. Your allies also need M.P. to use magic. You and your allies can fully recover your M.P. by staying at a hotel.

### ● ATTACK MAGIC



○ **BOLTTR 1—3**  
This magic gathers electricity in the air and throws it at the enemy.



○ **CORBOCK, SHRINK, CARABA**  
This magic shrinks the enemy or turns him into an item.



○ **FLAMOL 1—3**  
This magic causes a tornado of fire to burn the enemy.



○ **PERIUS**  
This magic throws a powerful concentrated rain on the enemy's head.



○MYMY

This magic stops the enemy's movement and changes it in to a hamburger.



○SEAL

This magic stops the enemy's magic and changes it in to a cake.



○GILZADE

This shoots fireballs from one's fingertips.



○SILLERT

This transforms the user into a mirror which can reflect the enemy's magic right back.



○VELVER

This uncovers the enemies that are covered in black fog.

## ● DEFENSIVE MAGIC

### ○ DEFENEE

This raises the defense power of all the members of the formation and reduces damage inflicted by one half.

### ○ PAMPOO

This recovers one of your allies' H.P. by 20 points during Command Mode battle. When you are on the field map, it recovers your H.P. by 10 points.

### ○ MARITA

This recovers one of your allies' H.P. by 50 points.

### ○ MATATO

This recovers the H.P. of all the members of the formation by 20 points.

### ○ RESEALO

This releases your allies who have been transformed and whose movement or magic has been stopped up by the enemy.

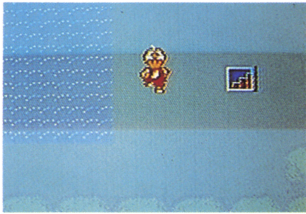


## ● COMBINED MAGIC

Don't forget to take lessons at Magic University to learn which formations are effective against which groups of enemies.

If you don't make the right formation the combined magic won't have any effect.

- **GYGATORN** (The Cygnus formation with Coronya and Faruk)  
This causes a storm which rises up and blows away the enemies.
- **MONIBURN** (The Libra formation with Kebabu and Gun Meca)  
This turns the enemies into missiles and then explodes them.
- **STARDON** (The Sirius formation with Pukin and Mustafa)  
This makes stars fall and inflicts heavy damage on the enemy.
- **TORNADOR** (The Aries formation with Epin and Supica)  
This traps the enemies in a sandstorm.
- **THUNDERN** (The Kaitos formation with Gubibi and Rainy)  
This calls thunder to strike the enemy.
- **FIREBOLT** (The Dragon formation with Faruk and Hassan)  
This is the strongest magic you can use, and will destroy most enemies with one blow.



## ● GREAT MAGIC

There is a **WISE MAN** living in each of the five worlds of Arabia. When you meet each of them they will give you their

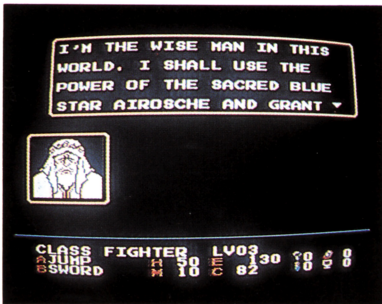
**GREAT MAGIC** which will cause splendid

miracles. You can use these spells only

during the **ALALART SOLAR**

**ECLIPSE**. You must also have

sufficient Magic Points.







- **MONECOM** - This magnificent spell will give you all the items and money you can carry. Your debt will also be cleared.
- **MOSCOM** - This will make a phantom mosque appear. You can then change your class there.
- **RAINCOM** - This brings rain to the desert and transforms it into a land of greenery.
- **SPRICOM** - This brings spring to the world of winter. You will be able to travel without losing any strength.
- **LIBCOM** - This revives all your dead allies.



## 11. ITEMS

SWORD	<p>There are several different types of swords. Whether you can or cannot use a particular sword depends on your class.</p> <p>The Fighter uses long swords. If he has enough H.P., his sword will shoot fireballs.</p> <p>The Saint can use some long swords, and some of his swords will also shoot fireballs if he has enough H.P.</p> <p>The magician is unskilled with the sword. He can use only short swords, and they won't shoot fireballs.</p> <p>Your sword can be used to reflect the enemy's bullets.</p>
ROD	<p>This weapon shoots fireballs when you wave it, and it is the best weapon to use against demons. The magician is the most skilled with the rod and is therefore more effective when fighting demons.</p>
MIRROR SHIELD	<p>If you're a saint, you can shoot back the enemies' bullets with this.</p>
LIGHT ARMOR	<p>These decrease your damage from the enemies.</p>
MAGICAL BOOTS	<p>If you're a saint, wearing this lets you pass through the Damage Zone safely.</p>
HOLY ROBE	<p>Putting this on lets you jump into the sea of lava from the cape.</p>

## ● ITEMS THAT ARE USED AUTOMATICALLY WHEN YOU HAVE THEM.

 <p>BREAD</p>	<p>When your H.P. reaches 0, you will automatically eat bread and recover 50 H.P.</p>
 <p>MASH ROOB</p>	<p>When your M.P. reaches 0, you will automatically drink mashroob and recover 50 M.P.</p>
 <p>KEY</p>	<p>Use this to open doors in the palaces. There are some doors which you can't open unless you first defeat an enemy.</p>
 <p>AMULET</p>	<p>When you have been transformed by an enemy's magic, the amulet will automatically return you to your normal form.</p>

## ● ITEMS THAT ARE USED BY SELECTING THEM

CARPET	This lets you fly back in one hop, to any town you have already visited.
RUPIA'S SEED	This turns you invisible and keeps the enemies from attacking you. Also, something wonderful may happen if you use it in a special way during the eclipse. ( See the next page. )
HAMMER	This makes stars fall from the sky and will defeat most of the enemies.
HORN	If you throw this at one of the gatekeepers in the demon's palace, the gate will open and you won't have to fight the gatekeepers. But there may be times when the horn will not work.
RING	KEBABU is in this ring. If you are held in a wizard or demon's field, she will help you escape.
MAP	This shows a diagram of the maze or palace you are in. It will appear on the subscreen when you enter a maze or palace. There is one map for each world, and it is sold at one of the shops. Be sure to buy it.



## 12. WHAT'S THE ALALART SOLAR ECLIPSE ?

The Blue Star is the guardian of Arabia, and it is not visible in broad daylight. But when the Alalart solar eclipse blocks out the sun, the Blue Star shines more brighter. This causes many wonders.

1. You will be able to use the GREAT MAGIC.
2. You'll be lucky at the Casino.
3. You will be able to plant the Rupia's Seed and harvest the Money Tree.

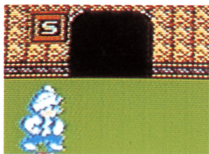
Go to the magic field during the eclipse and plant the Rupia's seed. There are two magic fields, the sowing field and the harvest field. After planting the seed in the sowing field, pass the time door to reach the harvest field.

(In Chapter 3, the sowing field is in the present and the harvest field is in the future.)



## 13. IN THE TOWNS ...

There are many places to visit in the towns. Make good use of them.



- **SHOP** — Many items are for sale here. You can also take out loans, but you will be charged interest. You can borrow up to a certain limit. If you borrow too much, you won't be able to borrow any more.

If you don't repay your debt, you won't be able to buy goods, and eventually, the game may end. Repay your debts as soon as possible, at any of the shops.

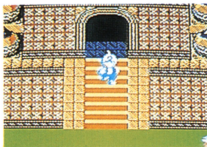


- **HOTEL** — You and your allies can fully recover your H.P. and M.P. by staying here.





- **MAGIC UNIVERSITY** — You can learn about making formations and other important things. Try to take all the classes. When you pass an exam, you may receive a special item that can't be obtained anywhere else.



- **MOSQUE** — You can revive dead allies, change your class, or receive passwords.



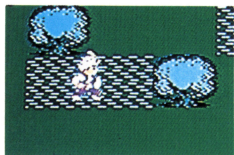
- **CASINO** — Here's your chance to make some fast money. Saints are not allowed here. Try to visit the Casino during the Alalart Solar Eclipse.



- **TROOPER'S OFFICE** — You can hire troopers here. Their strength will vary depending on the chapter you are on. All the troopers you have hired will get stronger in the next chapter.



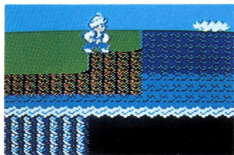
## 14. OUTSIDE THE TOWN ...



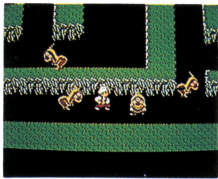
- **DAMAGE ZONE** — The damage zones are found throughout the wilderness. Your Hit Points will decrease when you cross them. But if a saint wears the Magical Boots, he can safely cross these areas.



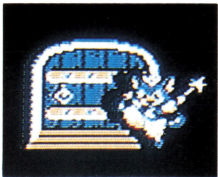
- **SEA** — You will die if you fall in.



- **CAPE** — You will die if you jump off. But under certain conditions you can safely jump into the sea from the cape.



- **MAZE** — There are many floors and passages to puzzle you. There are also some trapdoors. Be careful! The maze in Chapter 3 will be completely dark unless you have one of your allies to provide light.



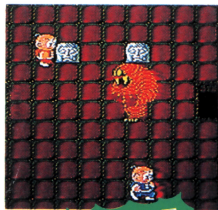
- **TIME DOOR** — Coronya will lead you to the past, the future, and the present through this door.

## ● LIST OF ITEMS

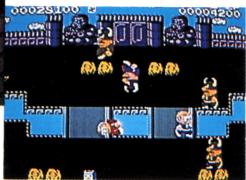
BREAD	Recovers 50 H.P.
MASHROOB	Recovers 50 M.P.
KEY	Opens palace doors
AMULET	Melts magic of transformation
CARPET	Just one hop to a town
RUPIA'S SEED	Makes one invisible      Plant during the eclipse
HAMMER	Wipes out enemies
HORN	Throw at stone statues in the palace
RING	Escapes from WIZARD or DEMON's FIELDS
MAP	Map of palaces and mazes

● **LIST OF MAGIC** Magic that can be used in command mode battle. (Does not include Combined Magic.)

	What it does	What it works on
PAMPOO	Recovers 20 H.P.	one ally
BOLLTOR	Electrical attack	one type of enemy
DEFENEE	Increases defense	all allies
FLAMOL	Fire Attack	all enemies
GILZADE	Bullet of fire	one enemy
MATATO	Recovers all members' H.P. by 20	all allies
MARITA	Recovers 50 H.P.	one ally
PERIUS	Heavy rain	all enemies
MYMY	Seals movement	one type of enemy
SEAL	Seals magic	one type of enemy
SILLERT	Reflects magic	Gun Meca
VELVER	Lifts fog	one type of enemy
RESEALO	Melts magic of transformation	one ally
CARABA	Transforms into item	all enemies

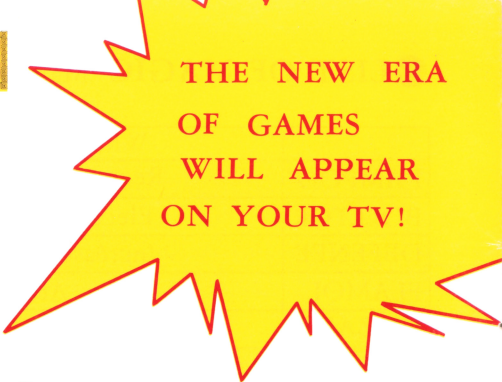


# KUNG-FU HEROES



ON SALE NOW!

A cute Kung-Fu action for dual play!



THE NEW ERA OF GAMES WILL APPEAR ON YOUR TV!

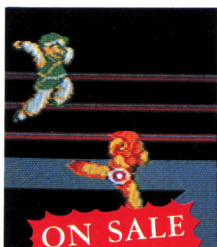


# BASEBALL SIMULATOR™



COMING SOON!

The ultimate baseball game you've been waiting for.



# FLYING DRAGON™ *The Secret Scroll*



ON SALE NOW!

At last, the definitive Kung-Fu action game has risen!

# CULTURE BRAIN USA, INC. LIMITED WARRANTY

CULTURE BRAIN USA, INC. warrants to the original purchaser only of this CULTURE BRAIN software product that the medium on which this computer program is recorded is free from defects in materials and workmanship for a period of ninety (90) days from the date of purchase. This CULTURE BRAIN software program is sold "as is," without express or implied warranty of any kind, and CULTURE BRAIN is not liable for any losses or damages of any kind resulting from use of this program. CULTURE BRAIN agrees for a period of ninety (90) days to either repair or replace, at its option, free of charge, any CULTURE BRAIN software product, postage paid with proof of date of purchase, at its Factory Service Center. Replacement of the cartridge, free of charge to the original purchaser (except for the cost of returning the cartridge) is the full extent of our liability.

This warranty is not applicable to normal wear and tear. This warranty shall not be applicable and shall be void if the defect in the CULTURE BRAIN software product has arisen through abuse, unreasonable use, mistreatment or neglect. THIS WARRANTY IS IN LIEU OF ALL OTHER WARRANTIES AND NO OTHER REPRESENTATIONS OR CLAIMS OF ANY NATURE SHALL BE BINDING ON OR OBLIGATE CULTURE BRAIN. ANY IMPLIED WARRANTIES APPLICABLE TO THIS SOFTWARE PRODUCT INCLUDING WARRANTIES OF MERCHANTABILITY AND FITNESS FOR A PARTICULAR PURPOSE, ARE LIMITED TO THE NINETY (90) DAY PERIOD DESCRIBED ABOVE. IN NO EVENT WILL CULTURE BRAIN BE LIABLE FOR ANY SPECIAL INCIDENTAL OR CONSEQUENTIAL DAMAGES RESULTING FROM POSSESSION, USE OR MALFUNCTION OF THIS CULTURE BRAIN SOFTWARE PRODUCT.

Some states do not allow limitations as to how long an implied warranty lasts and/or exclusions or limitations of incidental or consequential damages so the above limitations and/or exclusions of liability may not apply to you. This warranty gives you specific rights, and you may also have other rights which vary from state to state.

This warranty shall not be applicable to the extent that any provision of this warranty is prohibited by any federal, state or municipal law which cannot be pre-empted. CULTURE BRAIN USA, INC. 15315 N.E. 90TH Redmond, Washington 98052. Tel. 206-882-2339

## COMPLIANCE WITH FCC REGULATIONS

This equipment generates and uses radio frequency energy and if not installed and used properly, that is, in strict accordance with the manufacturer's instructions, may cause interference to radio and television reception. It has been type tested and found to comply with the limits for a Class B computing device in accordance with the specifications in Subpart J of Part 15 of FCC Rules, which are designed to provide reasonable protection against such interference in a residential installation. However, there is no guarantee that interference will not occur in a particular installation. If this equipment does cause interference to radio or television reception, which can be determined by turning the equipment off and on, the user is encouraged to try to correct the interference by one or more of the following measures:

- Reorient the receiving antenna
- Relocate the NES with respect to the receiver
- Move the NES away from the receiver
- Plug the NES into a different outlet so that the computer and receiver are on different circuits.

If necessary, the user should consult an experienced radio/television technician for additional suggestions. The user may find the following booklet prepared by the Federal Communications Commission helpful: How to Identify and Resolve Radio-TV Interference Problems. This booklet is available from the U.S. Government Printing Office, Washington, DC 20402



Distributed and marketed by CULTURE BRAIN USA, INC. 15315 N.E. 90TH Redmond Washington 98052. Nintendo® and Nintendo Entertainment System® are trademarks of Nintendo of America Inc. Game Pak "NES-GP". CULTURE BRAIN™ is a trademark of CULTURE BRAIN USA, INC. Package designed and produced by CULTURE BRAIN INC. TM and © 1989 CULTURE BRAIN USA, INC. All rights reserved.

Printed in Japan